

# EnginX

Toernooiveld 100, 6525 EC Nijmegen







EnginX

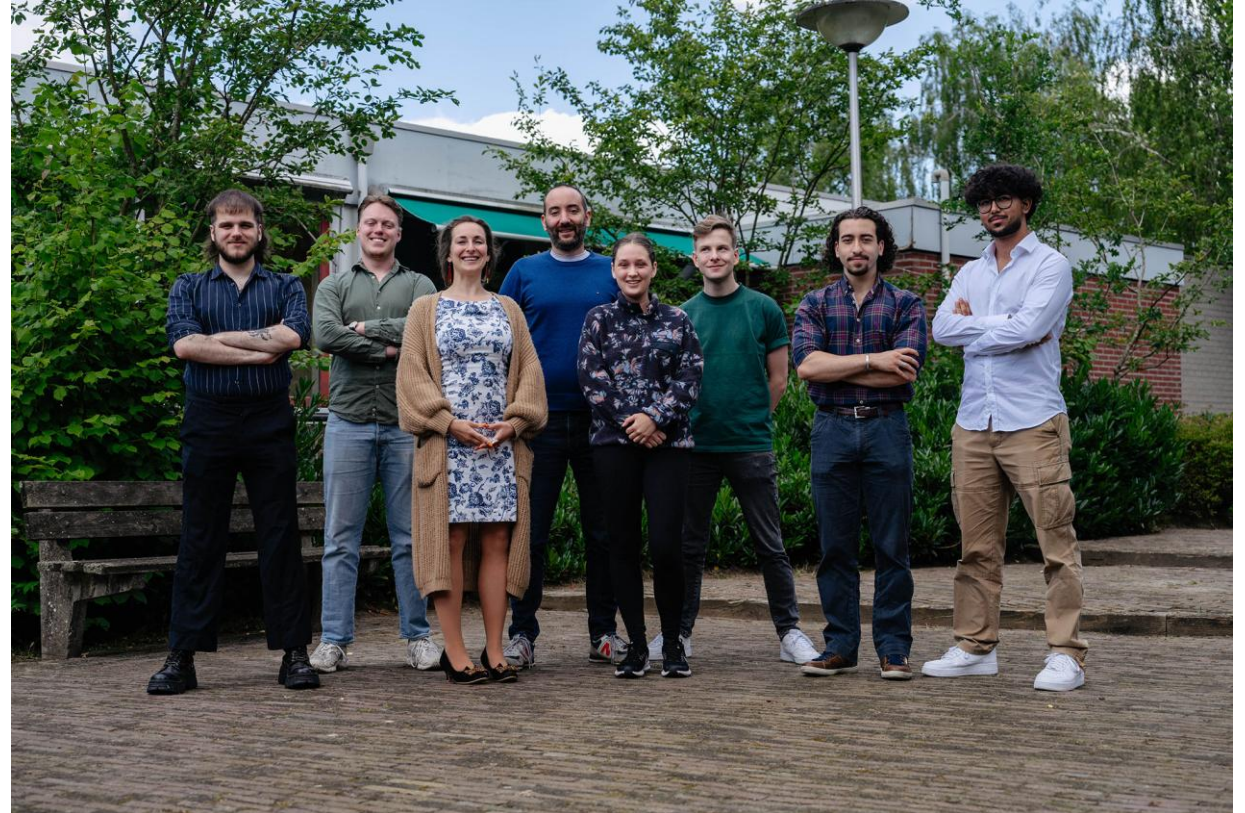
2020







EnginX





EnginX



Waterstof



Voedsel industrie



Maritiem



Luchtvaart

Energie transitie

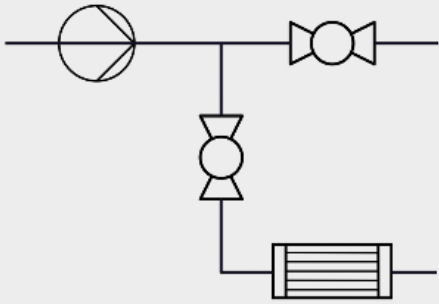






EnginX

## 1. Draw

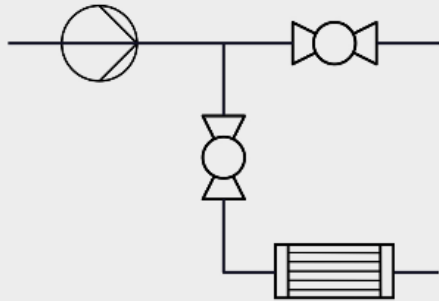


**Create** a complete P&ID using a drag-and-drop interface



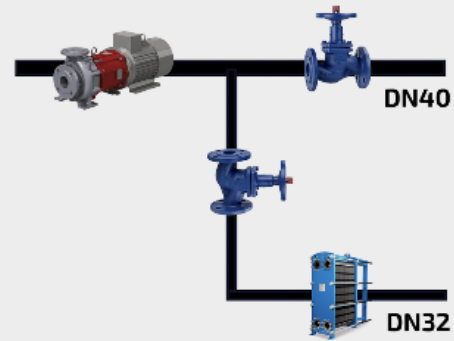
EnginX

## 1. Draw



**Create** a complete P&ID using a drag-and-drop interface

## 2. Configure



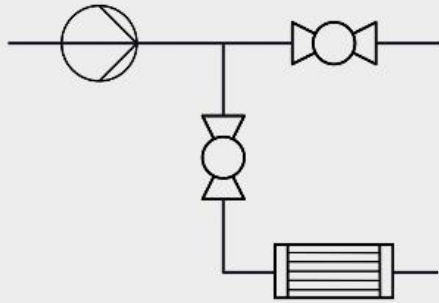
**Populate** your P&ID with components from our extensive catalog





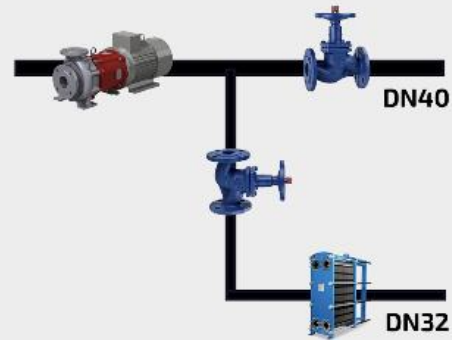
EnginX

### 1. Draw



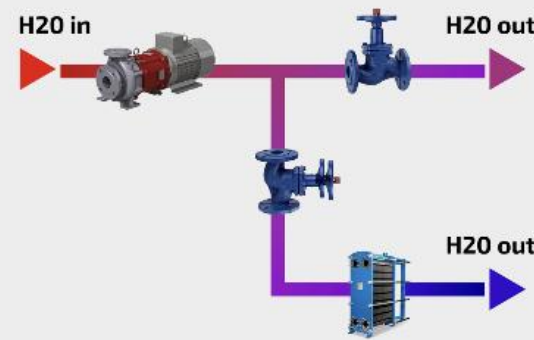
**Create** a complete P&ID using a drag-and-drop interface

### 2. Configure



**Populate** your P&ID with components from our extensive catalog

### 3. Simulate



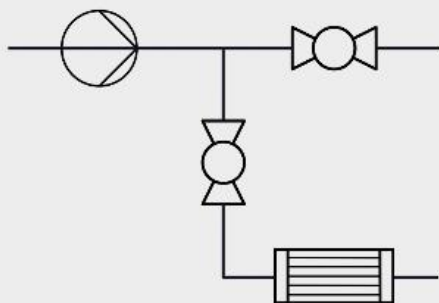
**Simulate** the resulting system's performance with physics algorithms





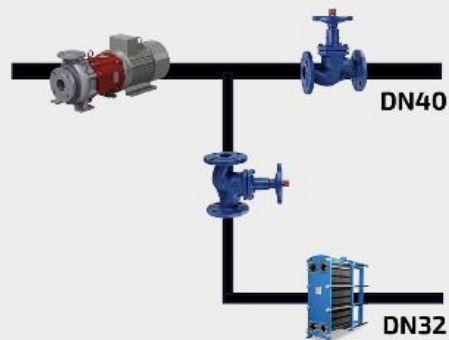
EnginX

### 1. Draw



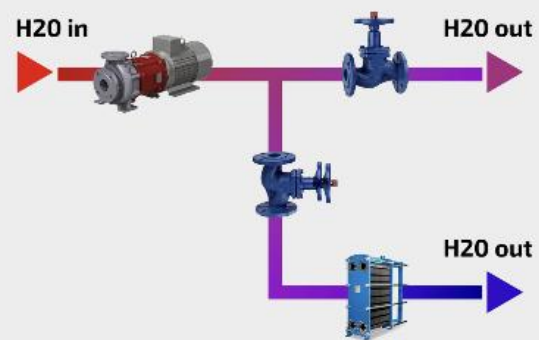
**Create** a complete P&ID using a drag-and-drop interface

### 2. Configure



**Populate** your P&ID with components from our extensive catalog

### 3. Simulate



**Simulate** the resulting system's performance with physics algorithms

### 4. Export



**Automatically generate** CAD, BOM, HMB, compliance reports, etc.



**EnginX**





EnginX

**Bedankt voor uw aandacht**