

The background of the slide is a photograph of a nuclear power plant with two large cooling towers emitting steam, set against a blue sky with clouds. The image is overlaid with a dark blue gradient.

H2O DRONES INNOVATIVE NUCLEAR SUBMERSIBLE ROBOTIC PLATFORMS

WHO ARE WE?



SALES

Reseller & Service Center
We sell Deep Trekker ROVs, a Canadian top-of-the-line manufacturer and market leader in its sector

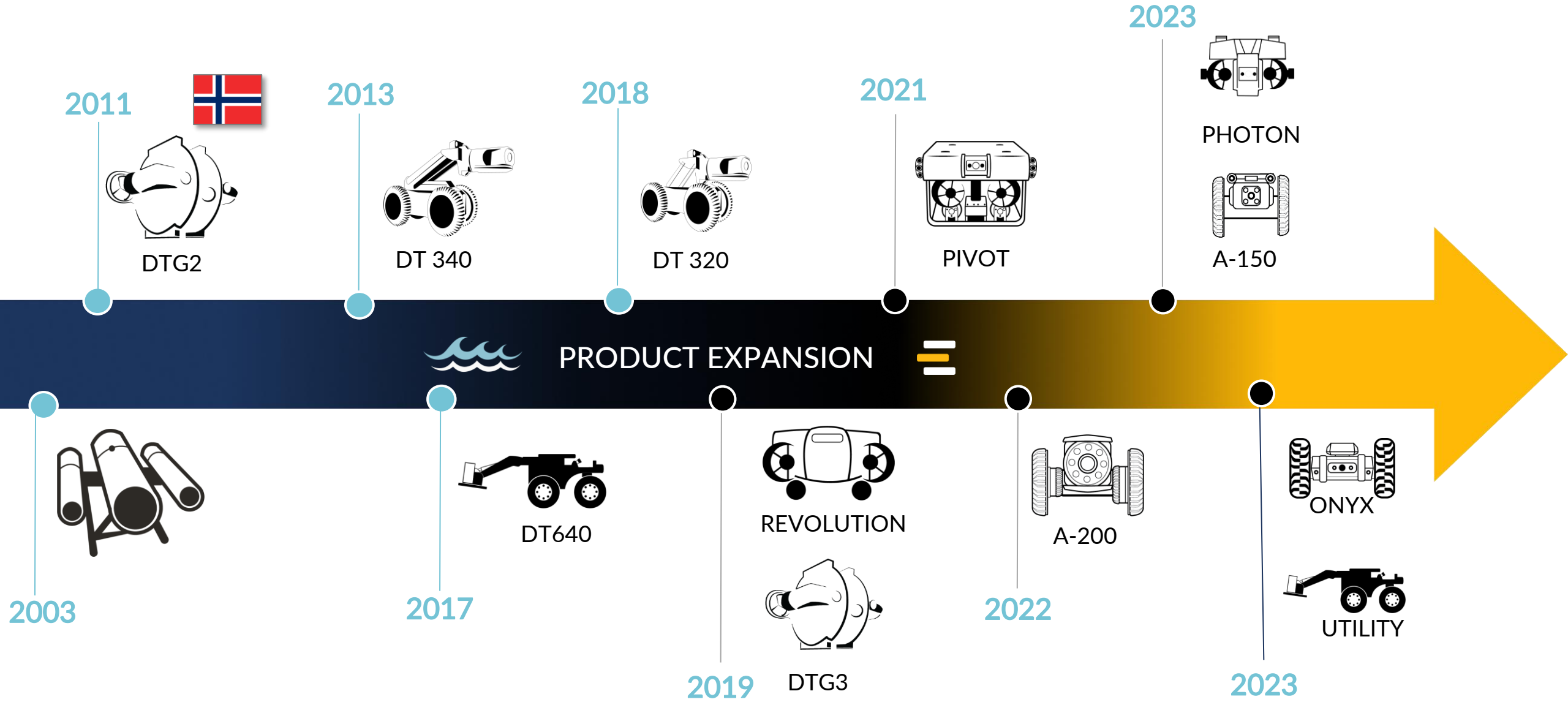


INSPECTION

Leading business in inspections
Simplifying complex underwater inspections through expertise and technology



A BRIEF HISTORY OF INNOVATIVE ROBOTIC SOLUTIONS



Photon ROV

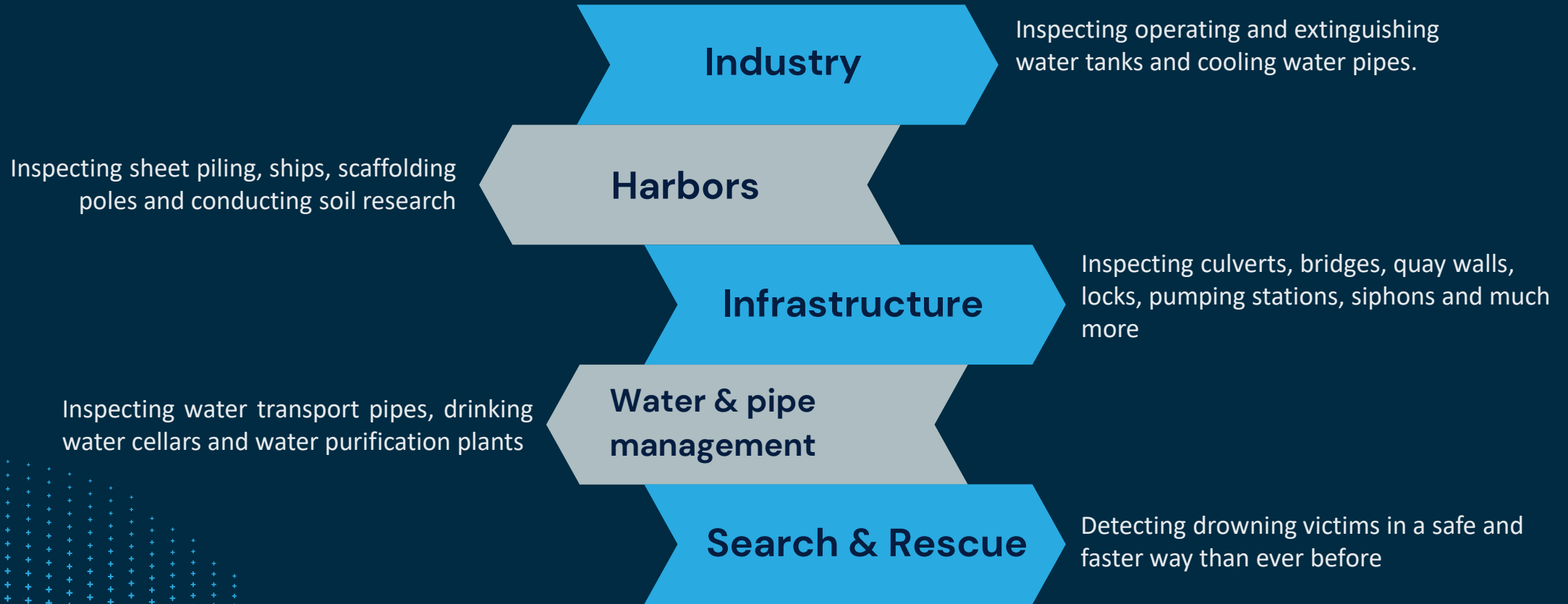
- Key Specs
- Weight = 10KG
- 4K UHD Camera
- 3 hour runtime



WHERE CAN YOU FIND OUR ROVs?

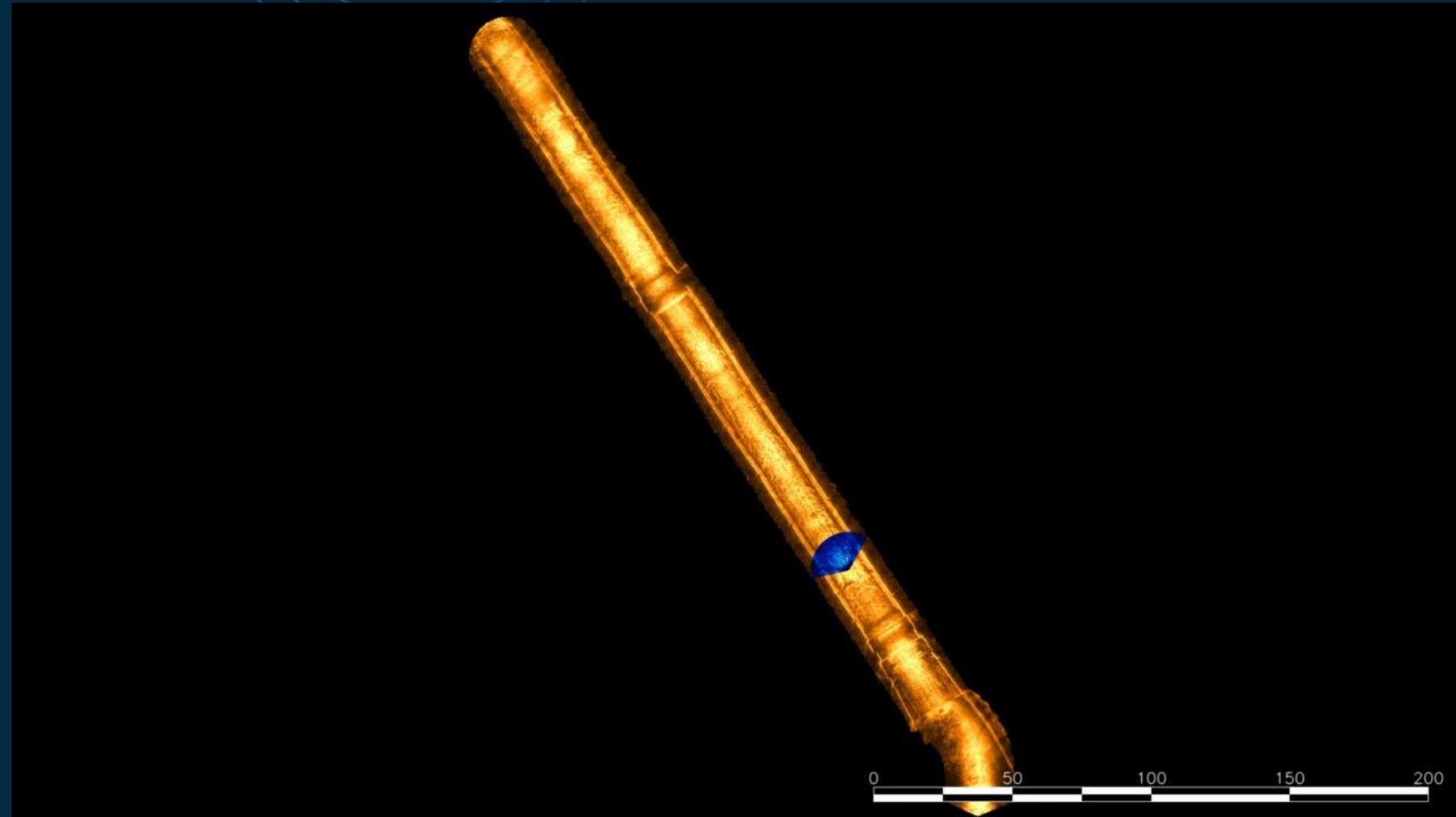


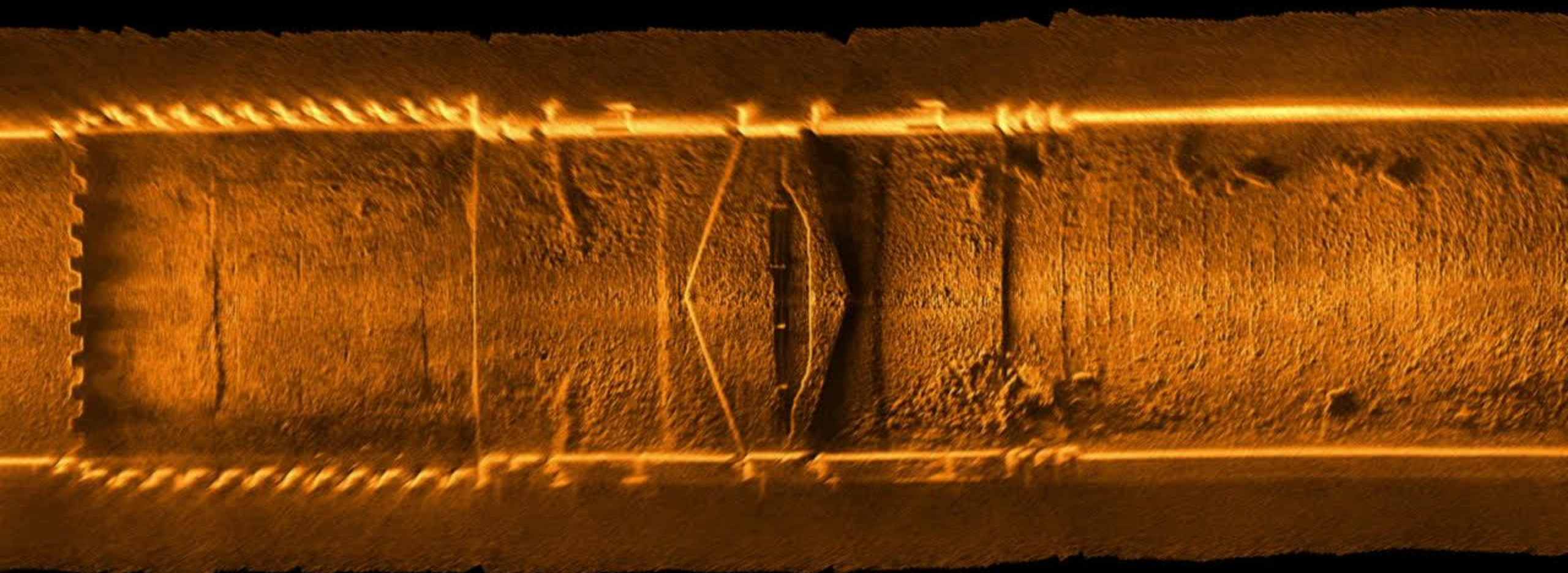
APPLIED IN:

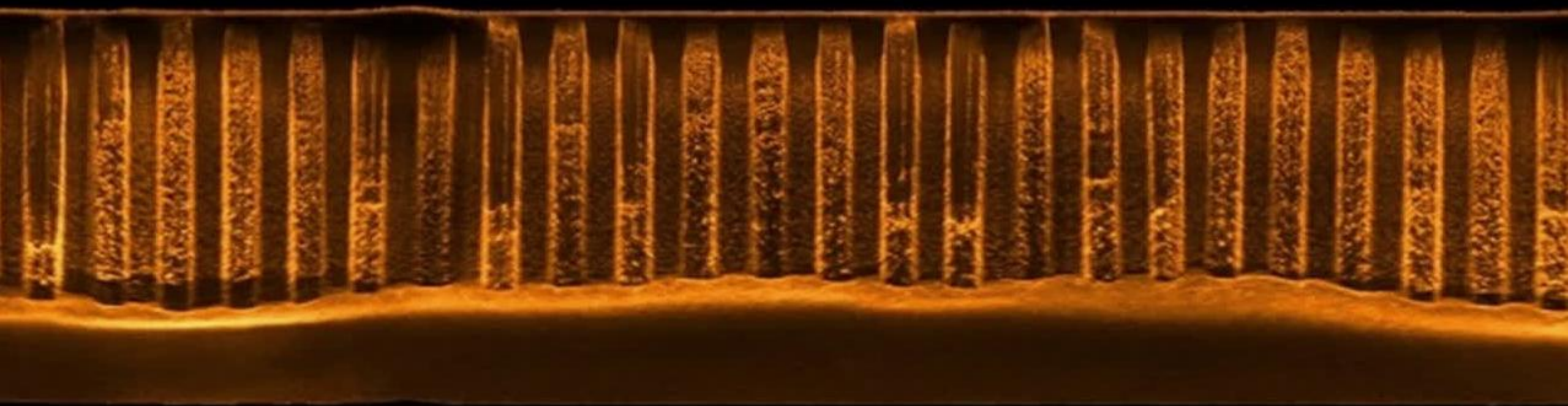


Data driven

Sonar optimization creates a complete overview of all sonar images taken during the inspection.







REVOLUTION

 DEEP TREKKER



Powerful zoom cam and direct power for safer operation in reactors, spent fuel pools, torus, etc.

Specifications

SPEED
3.5 knots

DEPTH RATING
Up to 305 m (1000 ft)

CAMERA
4K, zoom cam available

CONTROLLER
7" LCD

POWER
Direct Power

WIDTH
440 mm (17.3")

HEIGHT
235 mm (9.3")

LENGTH
717 mm (28.2")

WEIGHT
75lb

BODY MATERIAL
Aluminum + stainless steel

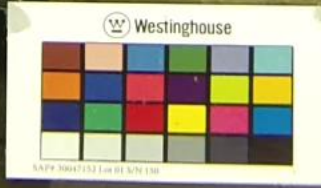
TRANSPORT
Two wheeled Pelican cases



SAP 30050531

 **Westinghouse**
INSPECTION SERVICES

o u c a crac VT-1
o u c a crac VT-2
o u c a crac
o u c a crac
o u c a crac VT-3




SAP 30050531

 **Westinghouse**
INSPECTION SERVICES

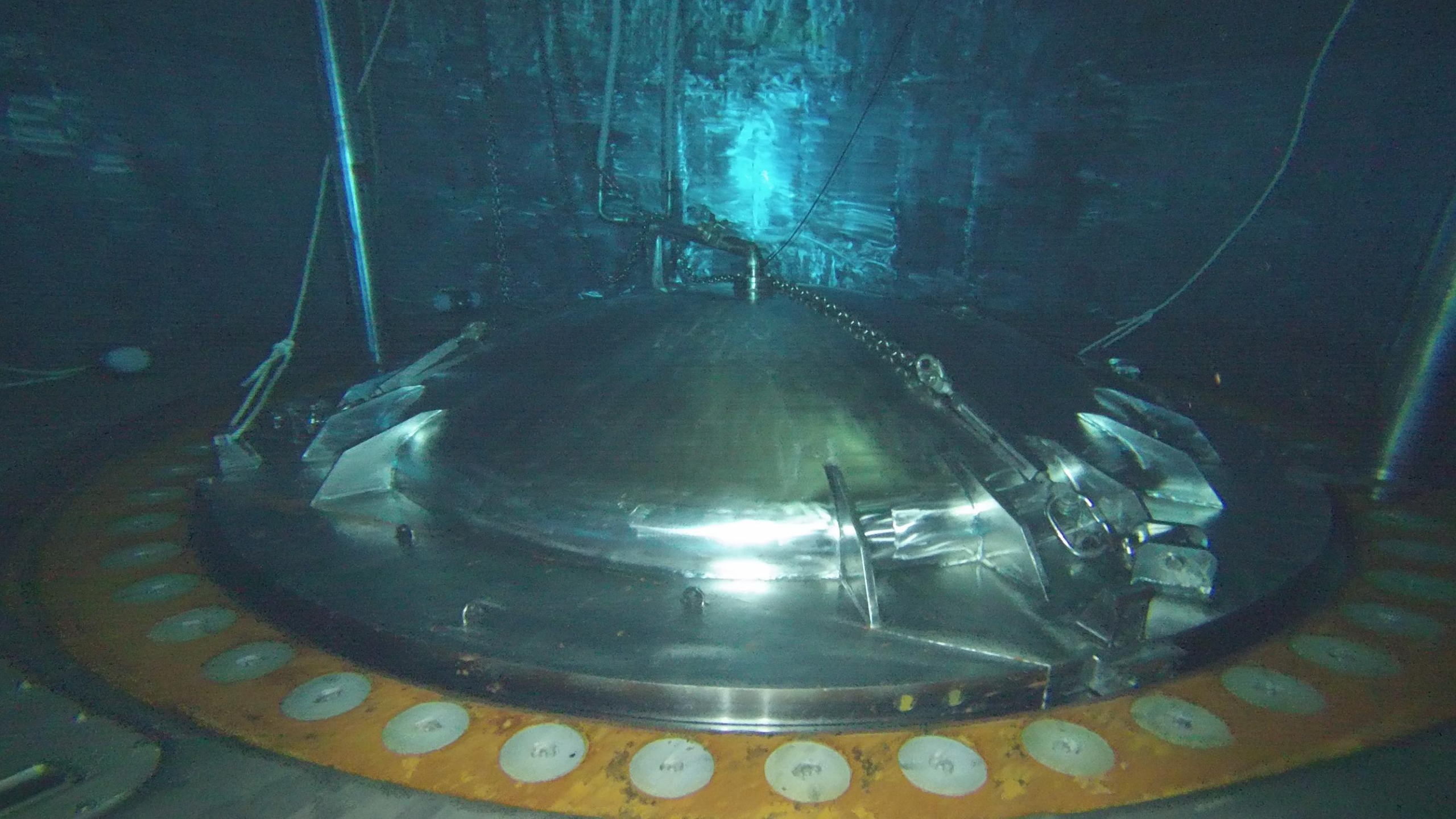
o u c a crac VT-1
o u c a crac
o u c a crac

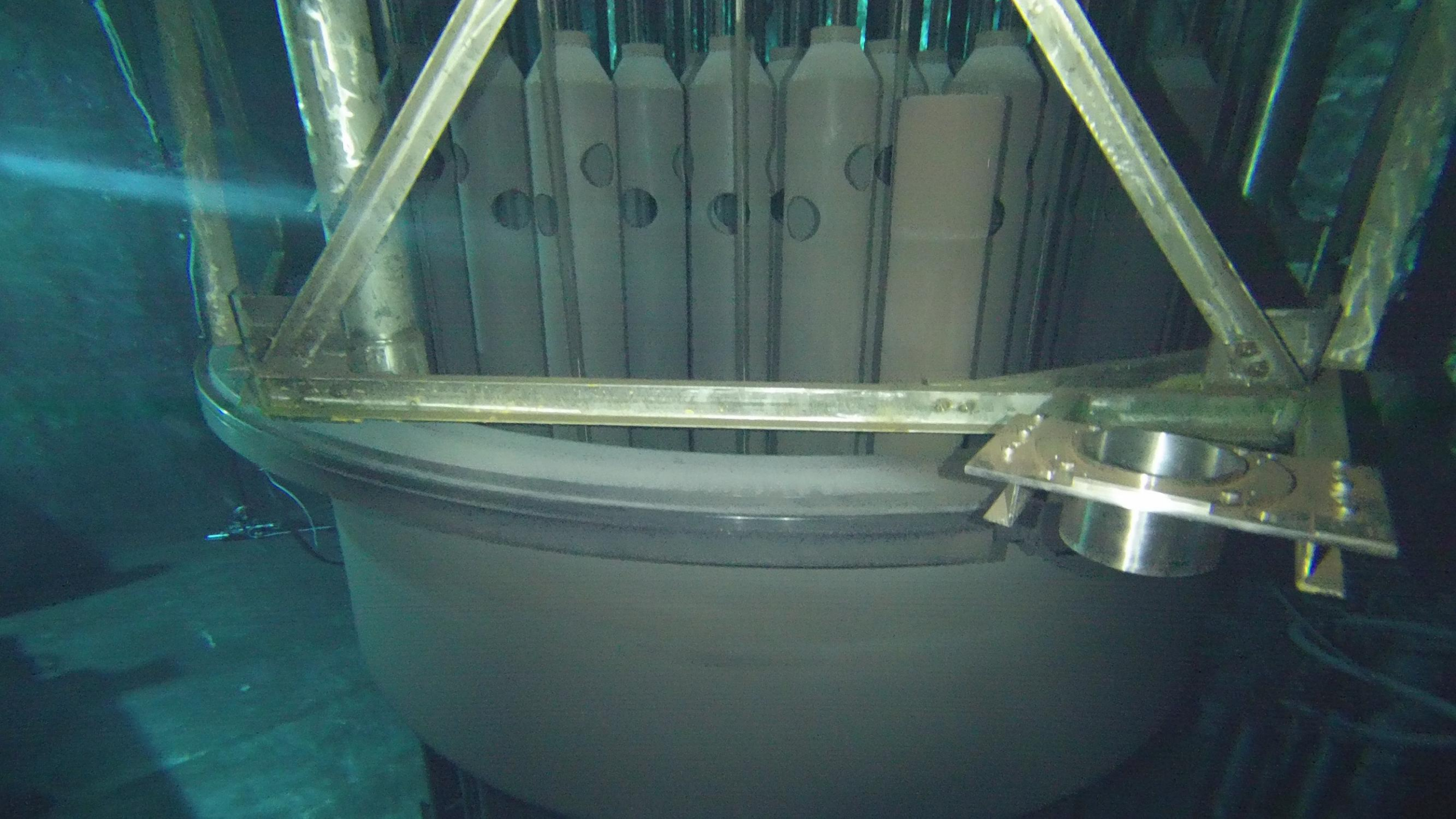
o u c a crac VT-2
o u c a crac

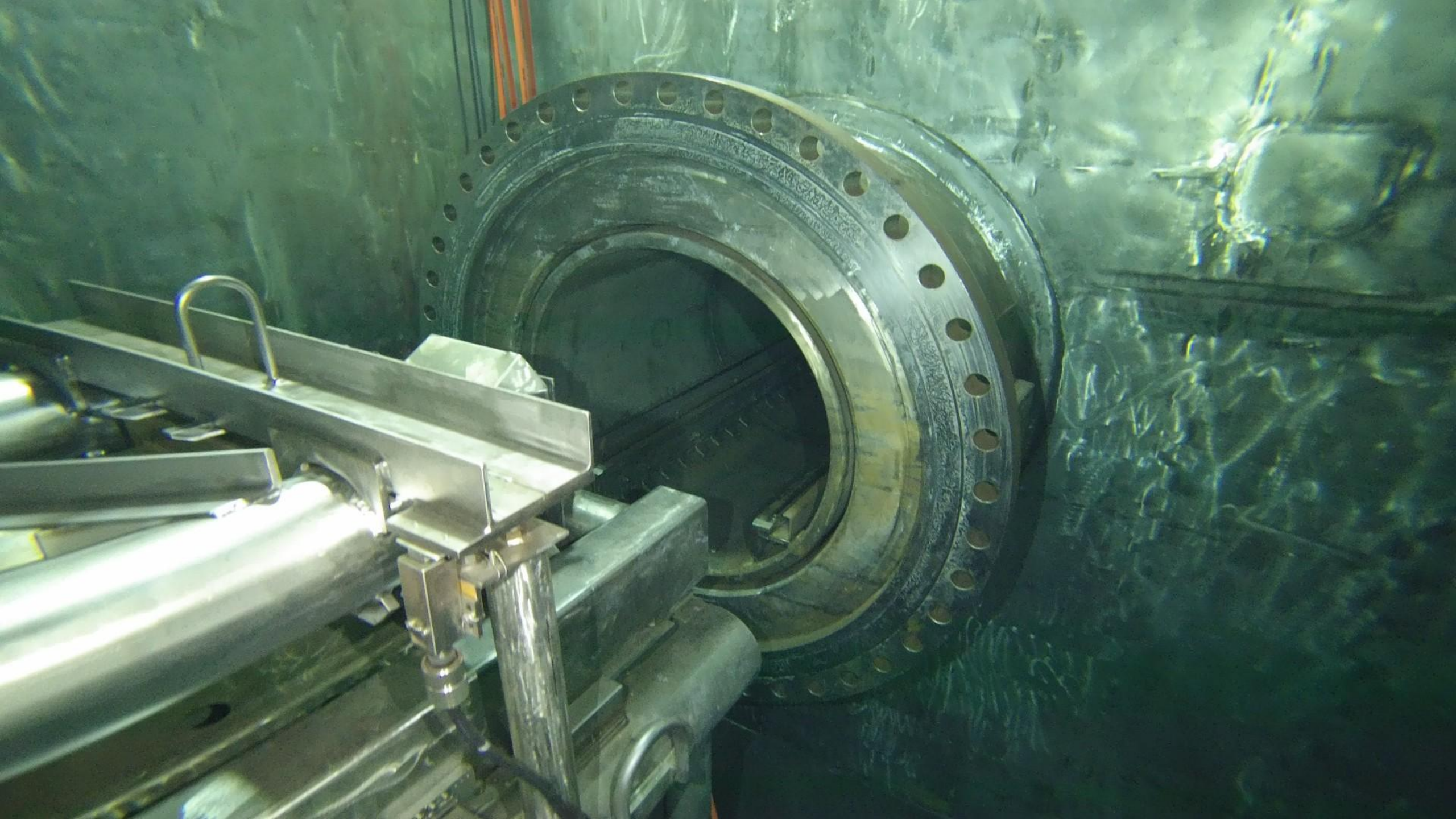
o u c a crac
o u c a crac
o u c a crac VT-3

 **Westinghouse**





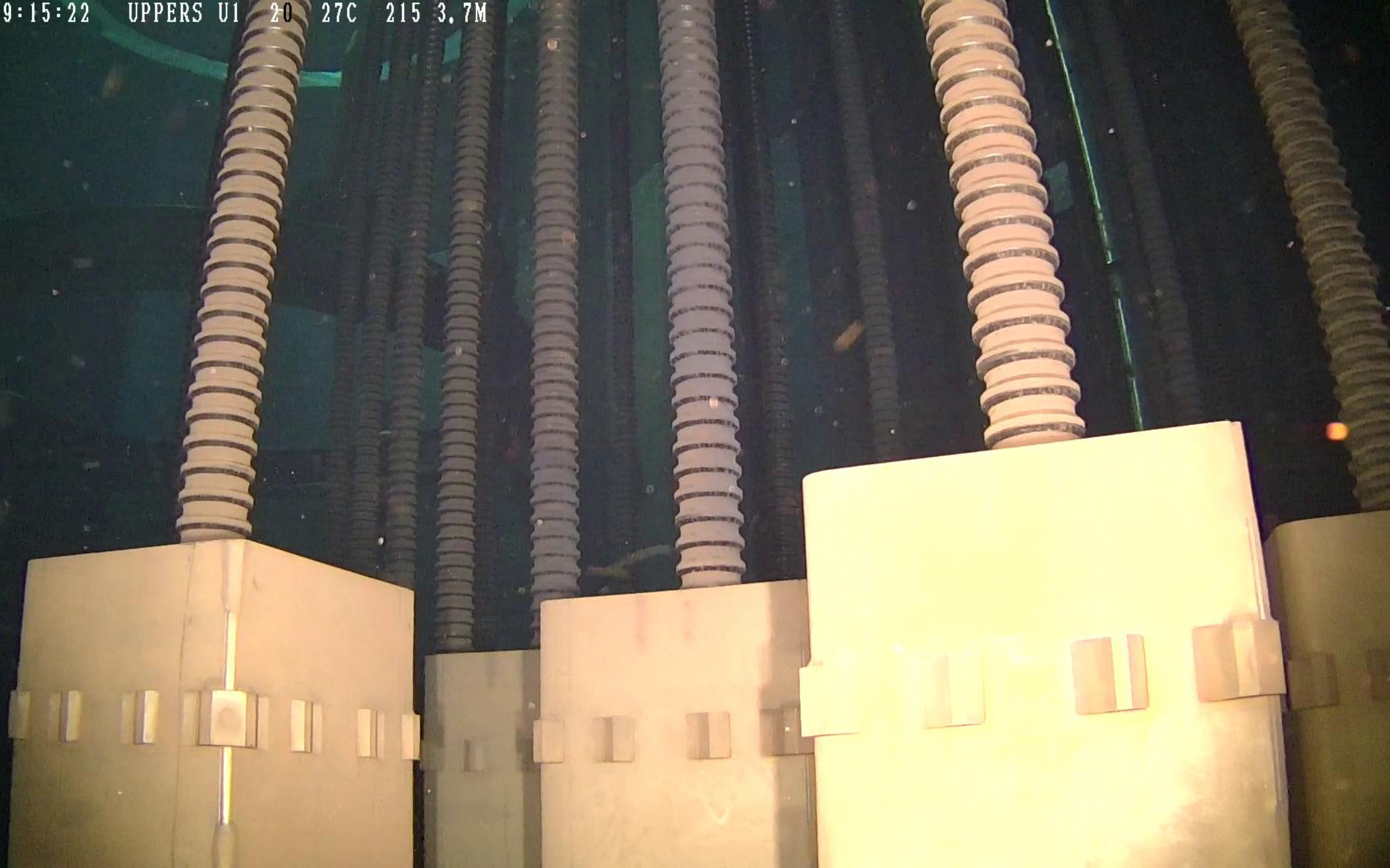




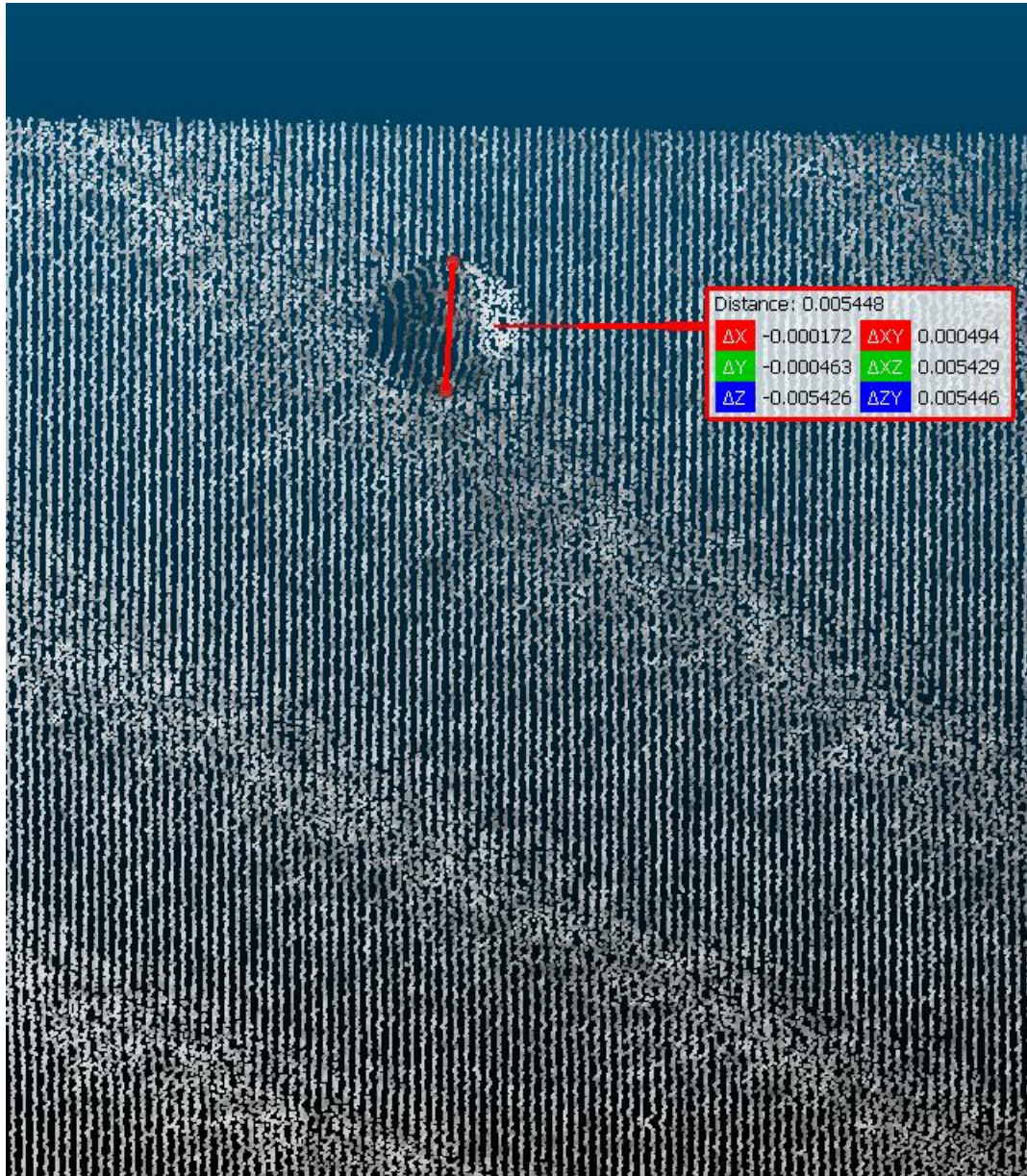


2020-05-17 09:15:22

UPPERS U1 20 27C 215 3.7M







UTILITY CRAWLER LINE-UP



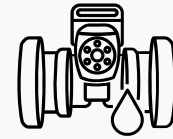


RADWASTE FILTER FROM TRI-NUCLEAR

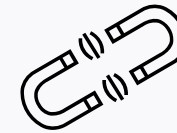
2019-09-18 12:08:38 DTJOB_-19__27C__183_1.4M



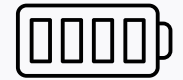
A-150 Confined Space Crawler



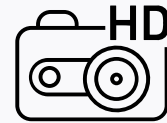
Fully submersible



Magnetically Coupled Drives



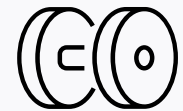
Battery Operated



High Definition Camera

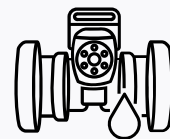


Direct Power Options

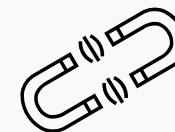


Durable

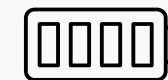
A-200 Pipe Crawler



Fully submersible



Magnetically Coupled
Drives



Battery Operated



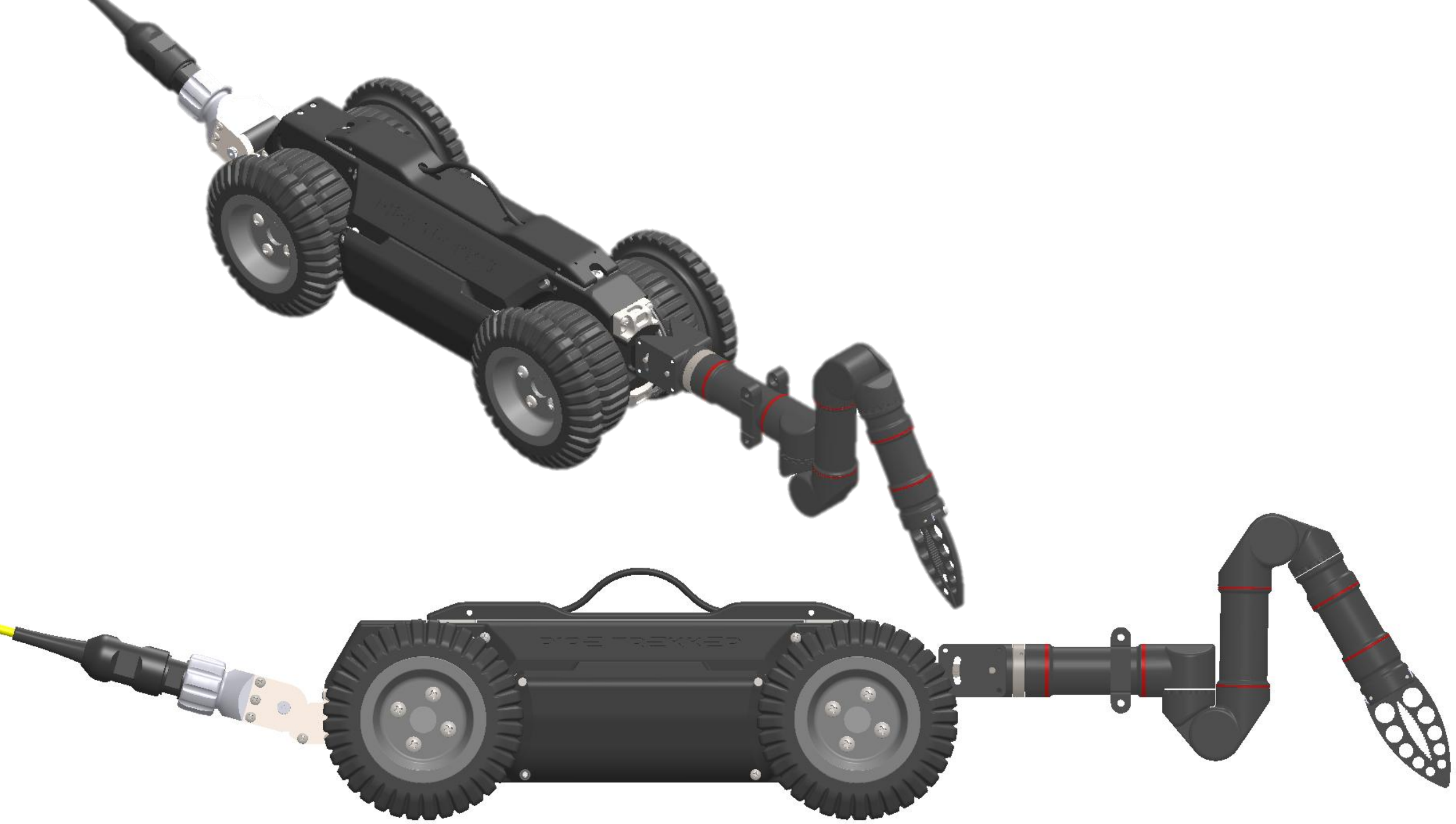
High Definition
Camera



Direct Power Options



Durable







Are there any questions?

We are always within reach



[026 303 1270](tel:0263031270)



info@h2o-drones.com

