



Symposium resilience en risicobeheer: inleiding

Prof. dr. ir. S.N. (Bas) Jonkman



Resilience of kaartenhuis?

New Orleans, 2005



Japan, 2011



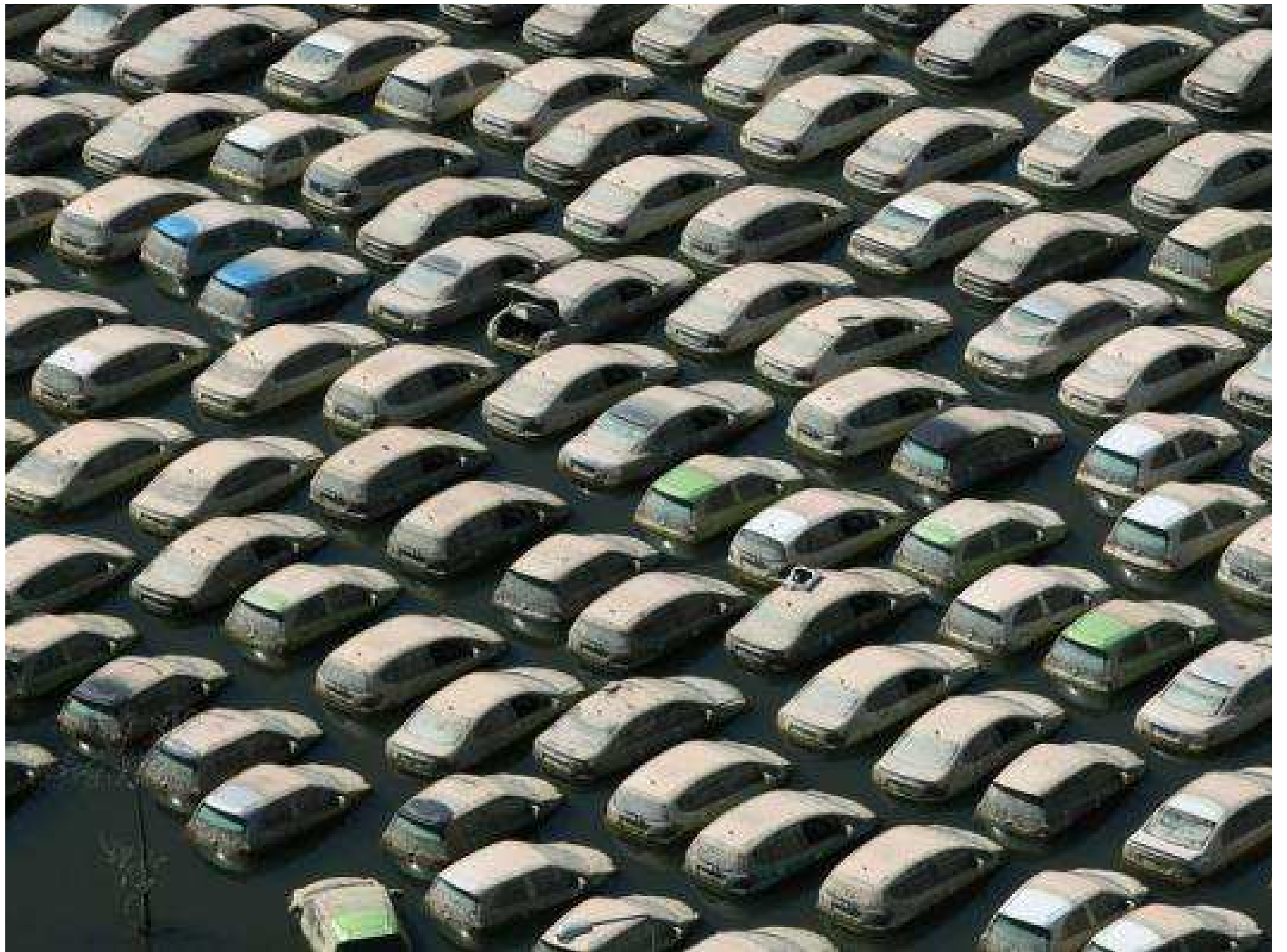
New York, Sandy, 2012



Thailand (2011), Rojana Industrial Estate

source: Wikipedia





source: Mathijs van Ledden



Sandy



PIONEERED BY THE
ROCKEFELLER FOUNDATION

100 RESILIENT CITIES



New Meadowlands
Meadowlands, New Jersey

Hunts Point Lifelines
South Bronx, NYC

Resist, Delay, Store, Discharge
Hoboken, New Jersey

Living with the Bay
Nassau County, Long Island

The BIG U
Lower East Side, NYC

Living Breakwaters
Staten Island, NY

Rebuilding with Resilience

Lessons from the Rebuild by Design Competition After Hurricane Sandy

REBUILD BY DESIGN

THE ROCKEFELLER FOUNDATION

GEORGETOWN CLIMATE CENTER
A Leading Resource for State and Federal Policy

Resilience definitions



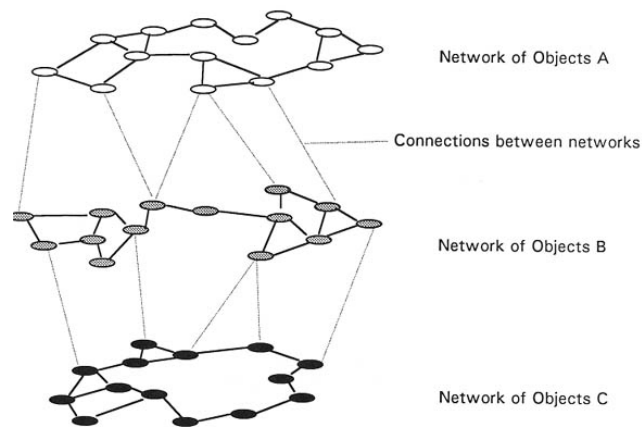
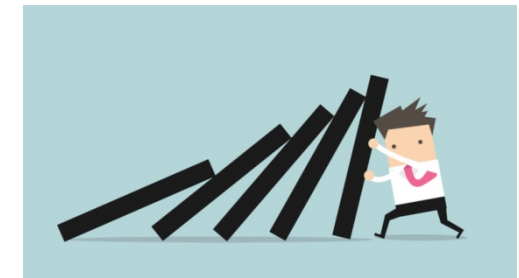
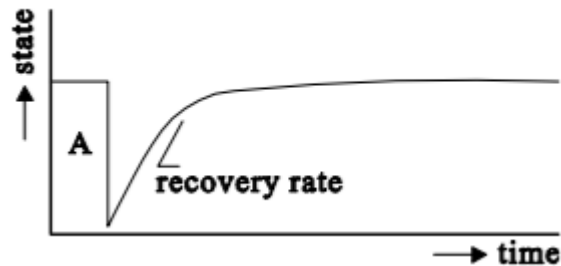
Resilience

The ability of a system, community or society exposed to hazards to resist, absorb, accommodate, adapt to, transform and recover from the effects of a hazard in a timely and efficient manner, including through the preservation and restoration of its essential basic structures and functions through risk management.

02 Feb 2017

Resilience concepten

Infrastructuur ↔ Organisatie ↔ Mens



organizational resilience
ability of an organization to absorb
and adapt in a changing environment



Doelen en vragen

- Stand van kennis op het gebied van resilience vanuit verschillende invalshoeken
- Hoe kunnen we deze kennis verbinden en toepasbaar maken?

Georganiseerd door KIVI afdelingen

- Risicobeheer en techniek
- Bouw- en waterbouwkunde

4TU-Centre Resilience Engineering

dr. ir. Marjolein Dohmen-Janssen, *managing director*



UNIVERSITEIT TWENTE.



Programma

- 16.00 - 16.15 Inleiding
- 16.15 - 16.45 Houston en Orkaan Harvey, *Bas Jonkman (TU Delft)*
- 16.45 - 17.15 ISO 22316, Organisational Resilience
mr. ing. John van der Puil
- 17.15 - 17.45 Organisaties en resilience, *dr. Tina Comes (TU Delft)*
- 17.45 - 17.50 Korte discussie
- 17.50 - 18.20 Broodmaaltijd
- 18.20 - 18.50 Pilot waterveiligheid Botlek; *Ir. Matthijs Bos (RHDHV)*
- 18.50 - 19.20 Persoonlijke eigenschappen en resilience
drs. Natasha Dodonova (Defensie)
- 19.20 - 19.40 Discussies
- 19.40 - 19.45 Samenvatting en afsluiting

Sint Maarten: orkaanbestendig en resiliënt

