



Protect your passive infrastructure investment

Tobias Münzer
Market Manager Public Networks
15.9.2016



Introduction

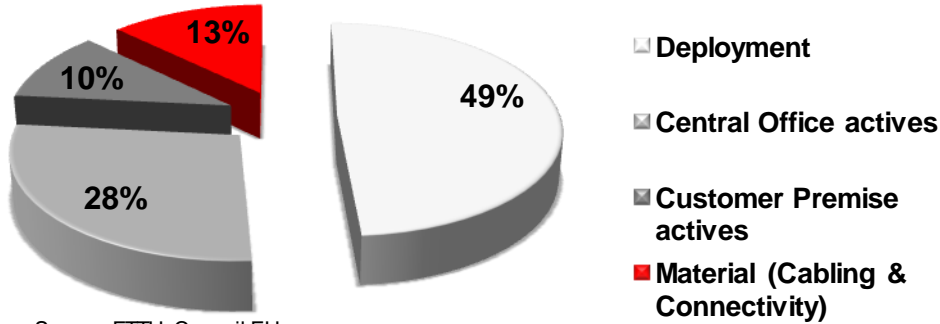
Biography

Tobias Münzer is Market Manager for Public Networks at R&M and has more than 10 years experience in Telecoms industry. Tobias is heading the Public Network Product management department and is globally responsible for the market and the entire portfolio. He joined R&M in 2007 as a Product Manager for Fiber Optics, the former years he worked in the Product management for a leading company in structured cabling. He has sound expertise in Layer 1 infrastructure for both technologies Copper and Fiber Optics.



Typical Capex allocation

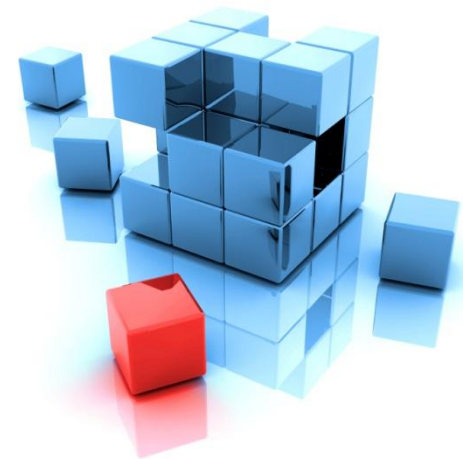
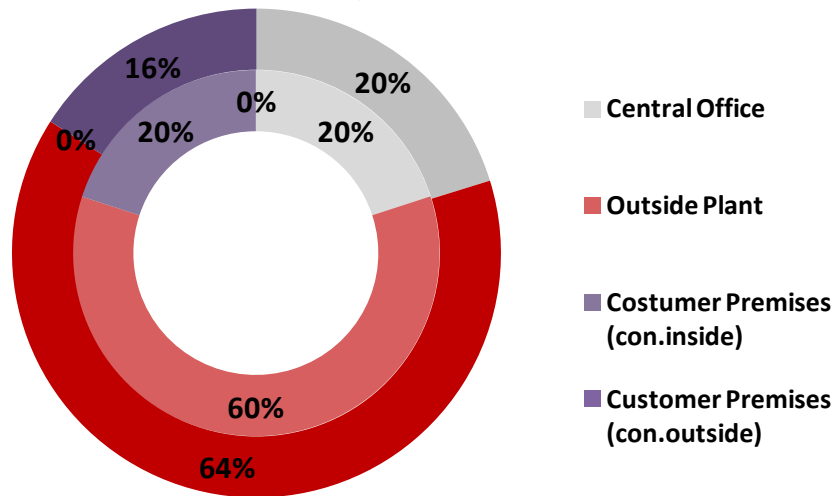
Capex allocation for a greenfield deployment



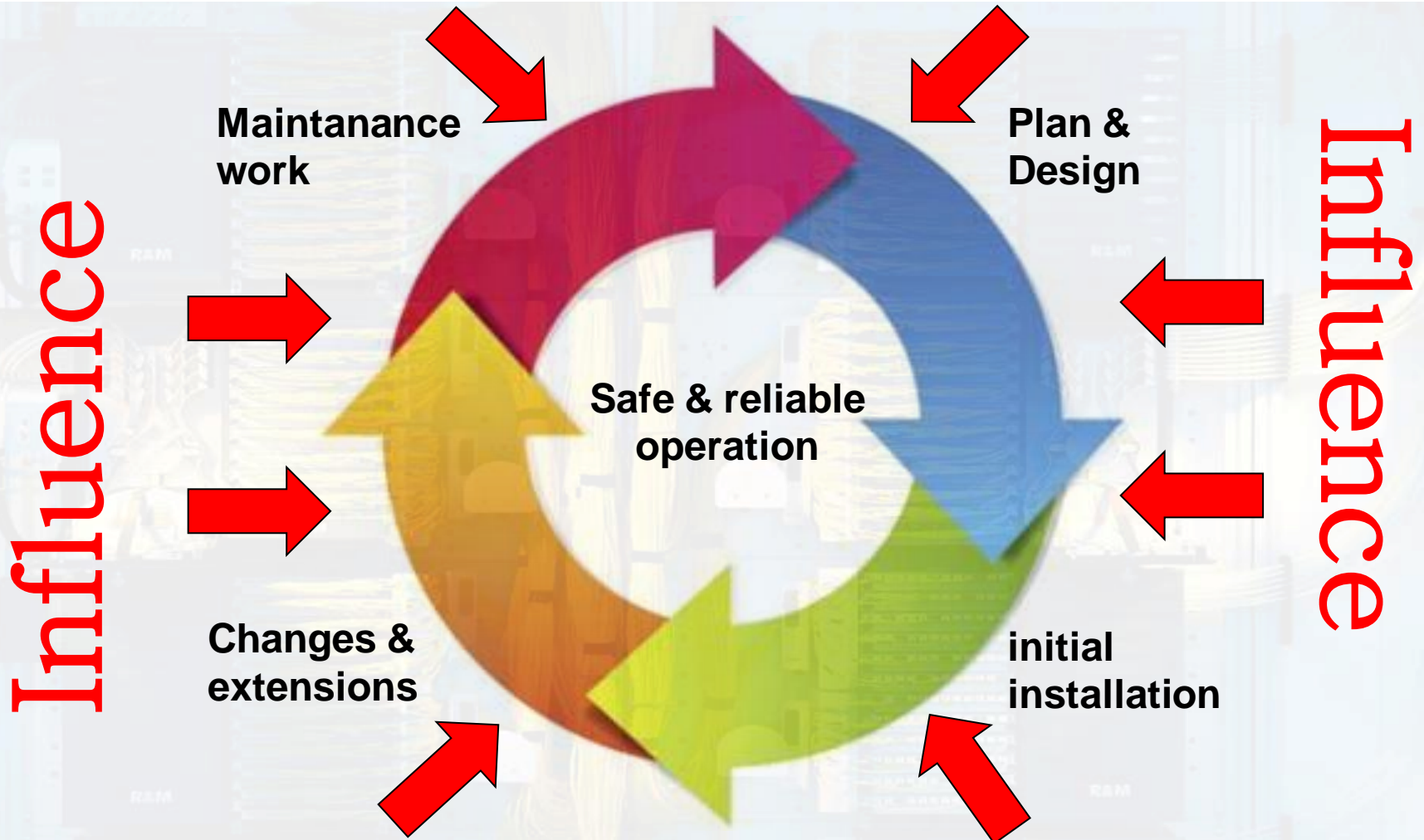
Source: FTTH Council EU



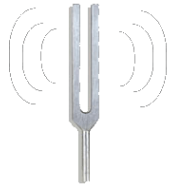
Capex allocation by solution area



Passive infrastructure – The rollout circle



Influence classes (passive Infrastructure OSP)



Mechanical

- Vibration
- Weight/ load
- ...

Human

- Vandalism
- Installation failure
- Planning failure
-



Environmental

- Temperature
- Water
- Humidity
- UV rays
- chemicals

Accidental

- Digging
- Traffic accidents
- ...



How to protect / prevent ?

- **use reliable solutions/products with intuitive and easy handling**

- to minimize installation mistakes & save installation time
- to withstand against most influences



- **use flexible and modular solutions**

- to expand and modify your network and enable planning flexibility
- to upgrade your network to upcoming technologies



- **training of all stakeholders**

- to ensure a proper planning
- to ensure a proper installation



- **monitor business critical connections**

- to identify failures very quickly
- to minimize the downtime to a minimum



Examples of typical used OSP products

Underground



Above ground



Aerial



Reliability

Example with closure



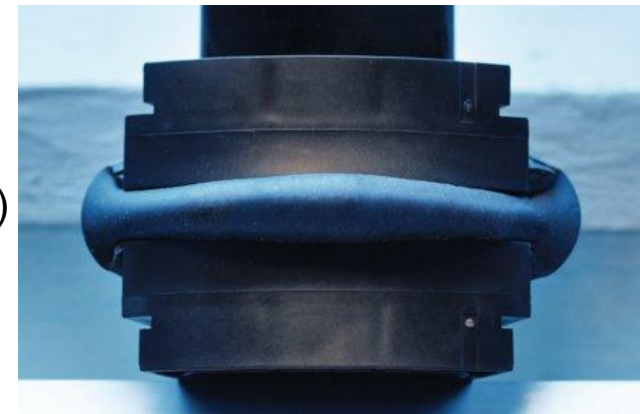
Minimize installation mistakes

- SYNO Gel Sealing Technology requires no heat gun or open flame
- Simplifies the complete cable sealing & preparation process
- Dramatically reduces cable sealing process
- Re-usable sealing elements and cable strain relief parts



Withstands several environmental influences

- Above IP68 (Water depth of more than 5m)
- Fungus resistant
- Longterm UV resistant
- Chemical resistance (salt acid, acid sulphur, insulating oil, etc.)
- Shock & Impact resistant
- Temperature resistant (-40°C up to 70°C)
- Built for decades to come (more than 30 years)



Flexibility & Modularity

Example with closure



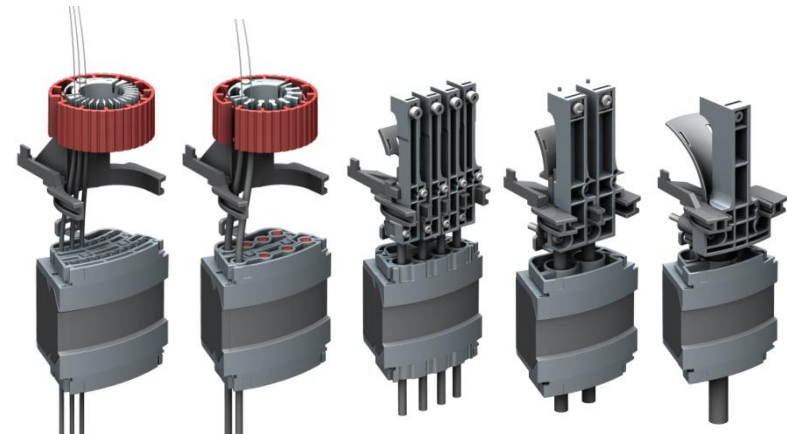
Expand and modify

- Cable range from 2 – 28 mm
- 8 independent cable entry bays individually equipable
- Max cable capacity 8 – 128 cables
- Changeable gel & strain relief kits during operation without interrupting the operation



Upgrade

- Every cable type and microduct can be mounted and sealed
- Suitable for P2P, P2MP or combined applications
- Add cables or microducts per sealing element without interrupting cables & ducts installed nearby



Training Certified Planner & Installers



- The best way to prevent human failures (instalation and planning mistakes) is training
- ... but training is not training...
- To ensure proper and reproducible trainings, several elements/modules are needed:



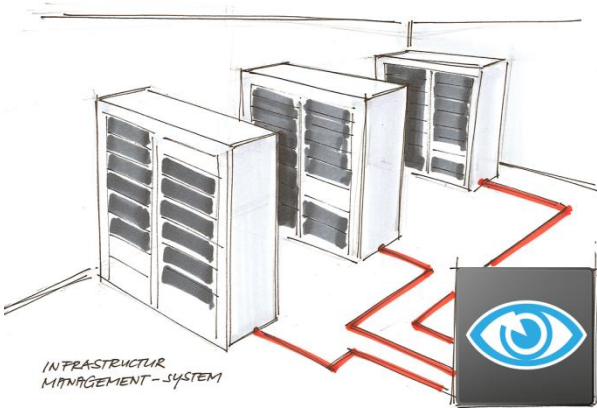
- ❑ consists always of a **theoretical** and **practical** part
- ❑ **tailor made** in close dialogue with the network operators since every network is unique
- ❑ **On-site training/** assistant from certified instructors to ensure a proper execution
- ❑ All participants should receive a personalized certification card and is documented in a database for **traceability & requalifications**



R&M *publiph*y

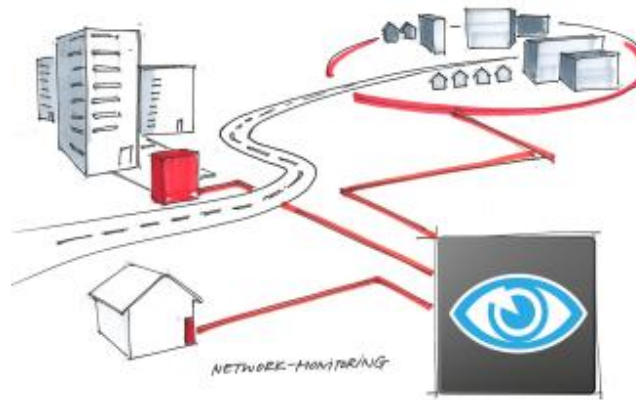


Automated infrastructure management



- Administration of physical layer infrastructure
- Automatic update of physical infrastructure documentation
- Alerts when unauthorized changes are made

Network/ Fiber monitoring



- Tracing & monitoring of fibers
- Unique subscriber identification by integrated reflectors in the connectivity itself

Infrastructure monitoring & authorisation



- Monitoring of the different parameters influencing the passive infrastructure
- Access authorisation & monitoring

Summary

- The highest invest of passive infrastructure goes to the area Outside Plant
- The passive infrastructure has to withstand several influences day by day and for decades to come
- Choose your infrastructure accordingly and not with a pure view to the CAPEX
If you buy cheap you pay dearly !
- Minimize/eliminate influences by using upgradable, modular and verifiable, reliable solutions
- Training & Monitoring will help to avoid initial & consequential damages



Thank you!

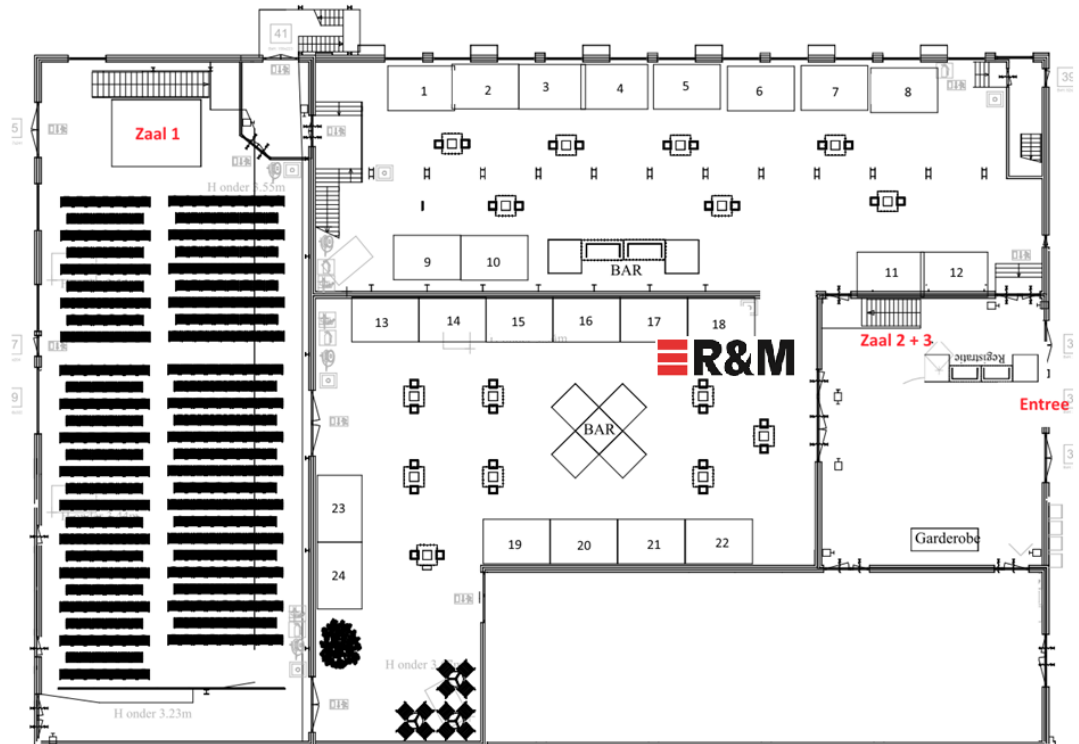


Contact Details

Johan Bil

Manager Public Networks
Reichle & De-Massari
Linie 508
7325 DZ Apeldoorn
Mob.: +31 (0) 6 14 365 322

E-mail: Johan.bil@rdm.com



For more information visit us at booth 18