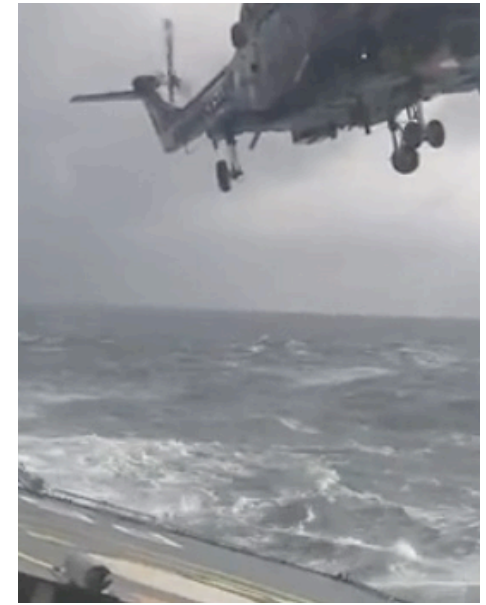


N E X T
O C E A N

M O R E
U P T I M E

L E S S
R I S K



NEXT
OCEAN

MORE
UPTIME



LESS
RISK



WE PREDICT THE FUTURE

Predict actual ship motions due to sea waves, minutes ahead in time

[About](#)

[Contact Us](#)

 **TU Delft**

UNIVERSITY OF TWENTE.



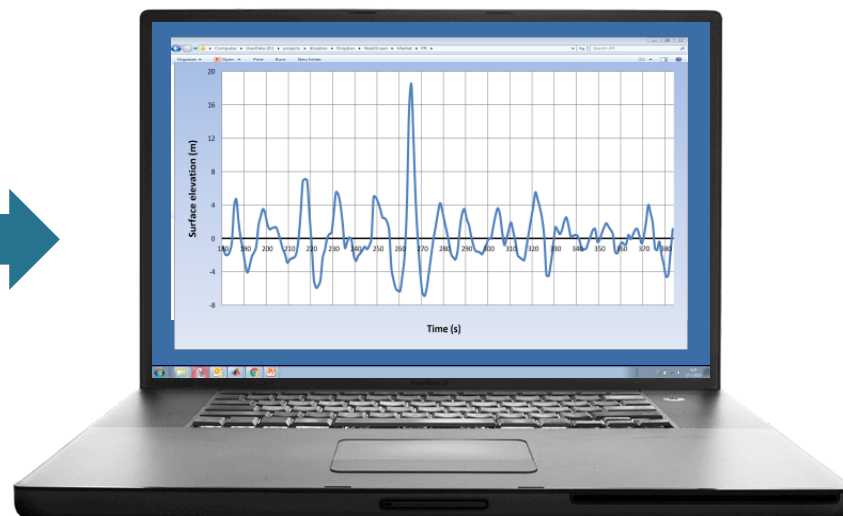
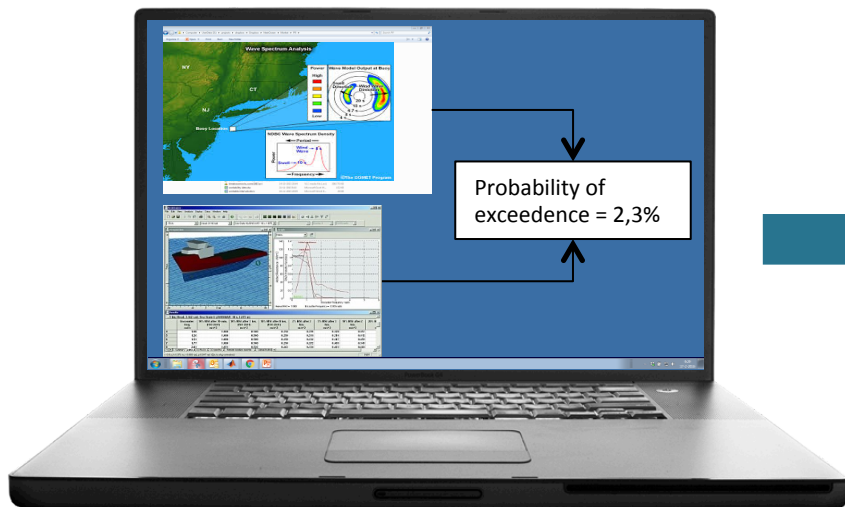
Reduce risks

Always be sure of what's coming



Increase uptime

Work safely in higher sea states

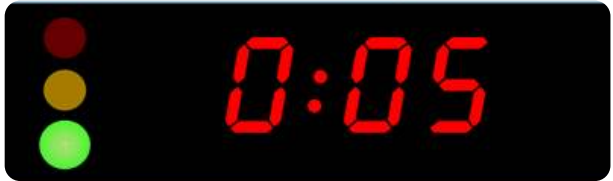
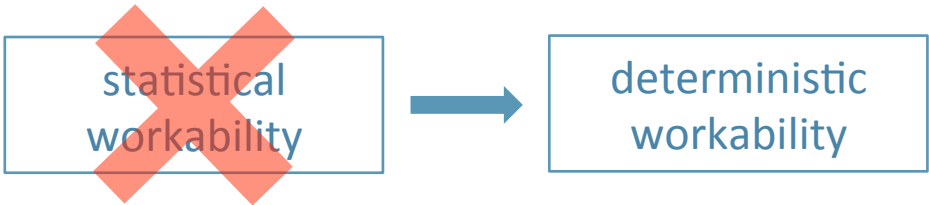
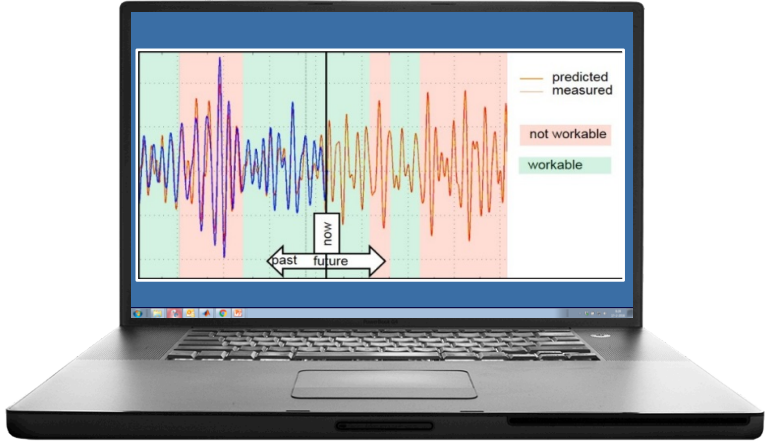


statistical

deterministic



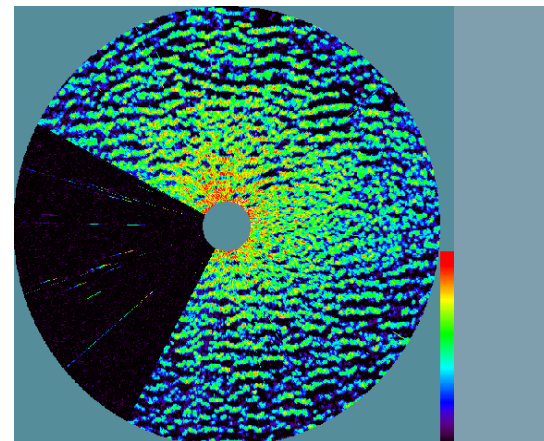
REAL TIME WAVE & MOTION PREDICTION



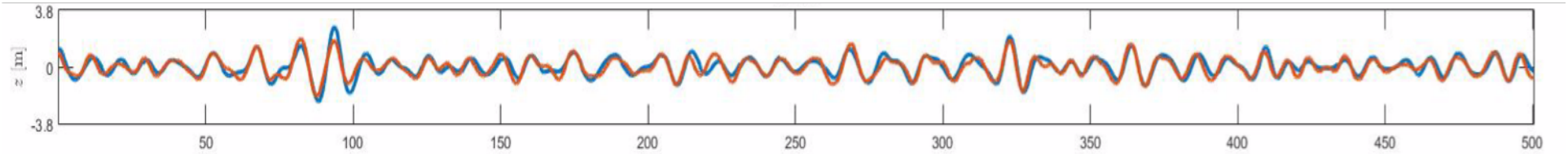
How Does it Work?



1. Use navigation radar as wave sensor
2. Predict wave propagation
3. Predict ship motion



Proof of Principle



60 s forecast of vertical heli-deck motion



measured vertical heli-deck motion

2012 – 2015

Fall 2015

Start 2016

Now

TU Delft
UNIVERSITY OF TWENTE

Winner Port of Rotterdam Innovation award

STW take-off subsidy granted

Opened office at Buccaneer

2 Pilots, launching customer



Take-off




BUCCANEERDELFT
energy ✕ offshore accelerator



peternaaijen@nextocean.nl

karelroozen@nextocean.nl





www.nextocean.nl