



Environmental Ship Design & Systems

IMTECH MARINE & OFFSHORE

**Manuel Geerts
Manager Marketing & Sales
Special Vessels & Offshore**

PASSION BEYOND TECHNOLOGY



Imtech - Environmental Ship Design & Systems

- Overview Imtech Marine Group
- Imtech Marine & Offshore
- Green Ship Design
- Typical Projects



Imtech: Where would we be without Technology?



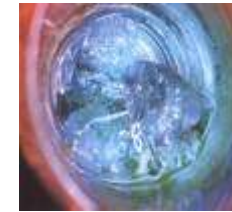
Tunnels



Security



Telephony / Data



Water Treatment



Buildings



Research



Airports



The Car Industry



(Petro) Chemicals



Energy



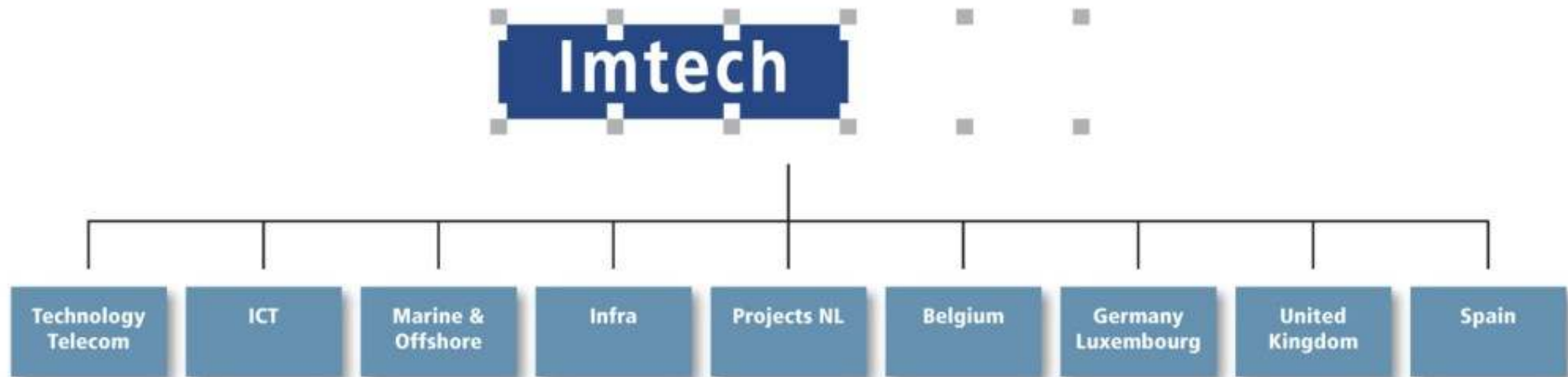
Maritime



Infra / Mobility



Imtech Group



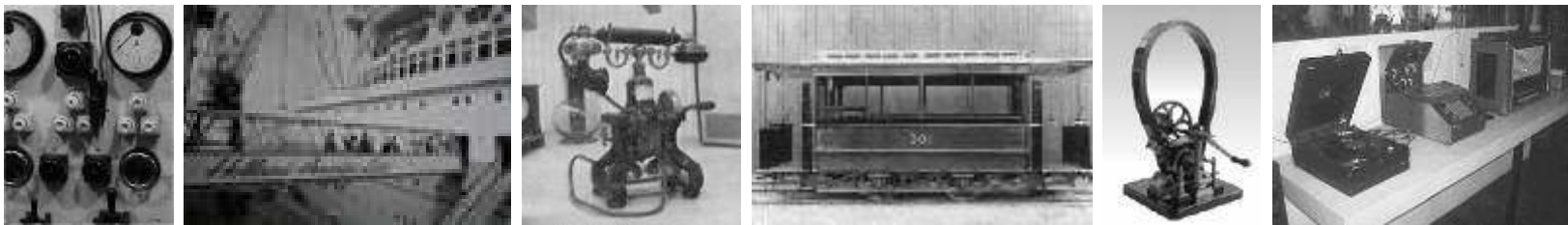
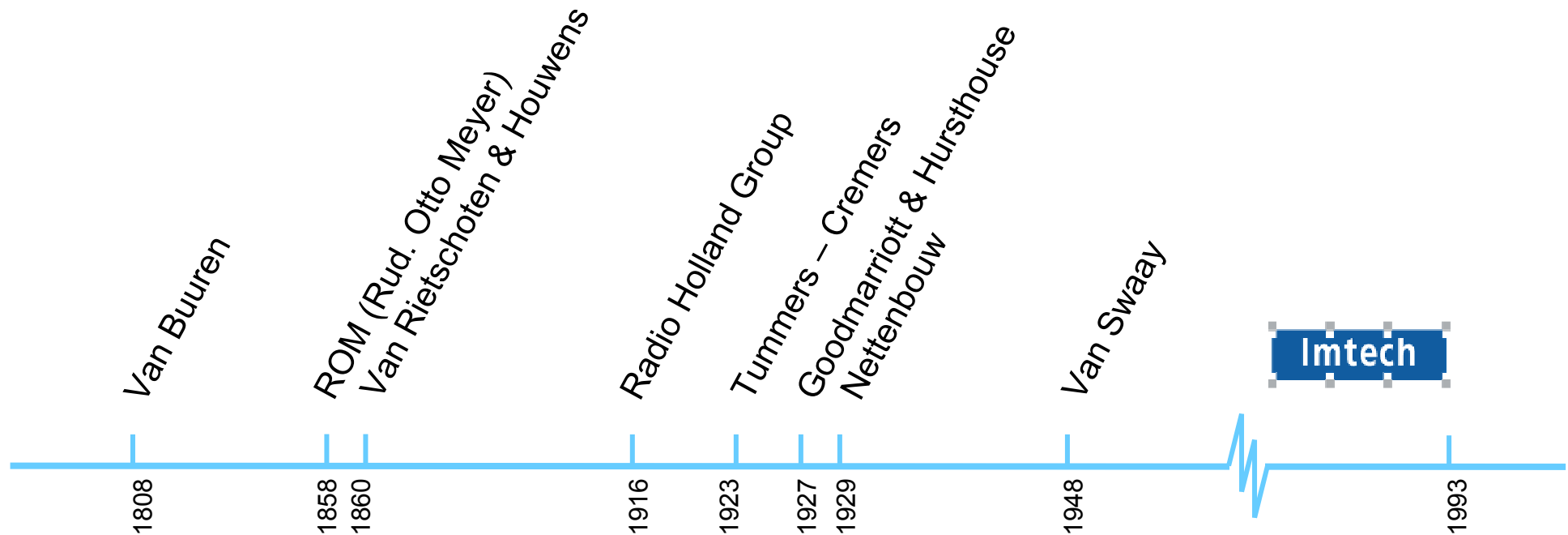
Total Annual Turnover: 2,5 billion Euro

Total Workforce: 22.000

Main Activities in The Netherlands, Belgium, Germany, Scandinavia, Spain & UK



Strong Roots in Society





Imtech Marine Group - Corporate Values

PASSION & FUN



TRUST & RESPECT



SAFETY & HEALTH



DEVELOPMENT



RESPONSIBILITY



PROFESSIONALISM





Imtech View on Sustainability

Imtech aims to make a substantial contribution towards a more liveable and more sustainable society. Marine examples:

- Green ship: (Diesel)electrical propulsion on board ships.
- Energy efficiency programs on existing ships and newbuilds.





Imtech Marine Group



Number of employees 2350+
Revenues 550 million €

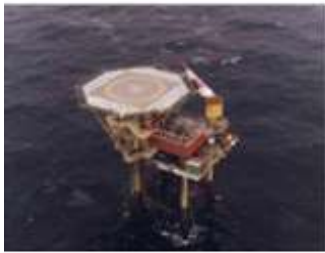


Imtech Marine Group Companies

<p>Radio Holland Group</p> <ul style="list-style-type: none"> ▪ Global Nav/Com systems integrator ▪ Connectivity & IT ▪ Service & maintenance specialist for various maritime market segments. <p><i>62 offices, in 19 countries</i></p>	<p>Imtech Marine & Offshore</p> <ul style="list-style-type: none"> ▪ Electrical & Automation ▪ HVAC ▪ System integrator for special vessels & offshore, navy ships and megayachts. <p><i>The Netherlands, UK, France, Singapore, USA</i></p>	<p>Imtech Schiffbau- / Dockbautechnik</p> <ul style="list-style-type: none"> ▪ HVAC solutions ▪ Fire protection ▪ Piping systems ▪ For cruise vessels, navy ships and special vessels. <p><i>Germany, Italy, France, Singapore</i></p>	<p>Imtech Marine Germany</p> <ul style="list-style-type: none"> ▪ Electrical & Automation ▪ Nav/com ▪ System integrator for merchant ships, megayachts and offshore vessels. <p><i>Germany and China</i></p>	<p>Van Berge Henegouwen Installaties</p> <ul style="list-style-type: none"> ▪ Audio/Video ▪ IT ▪ Security and lighting systems ▪ Comfort electronics for luxury megayachts. <p><i>The Netherlands</i></p>	<p>Royal Dirkzwager</p> <ul style="list-style-type: none"> ▪ Maritime Information and service provider. <p><i>The Netherlands</i></p>

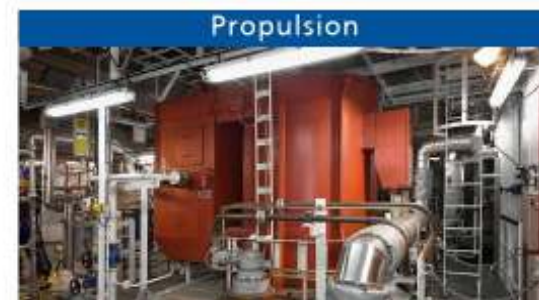
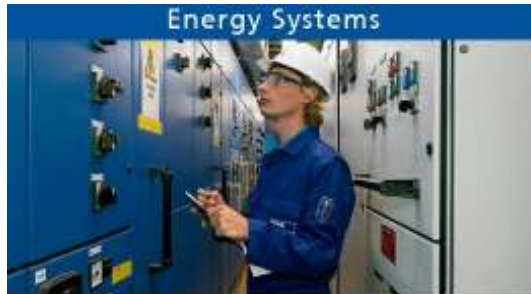


End-Customer Markets



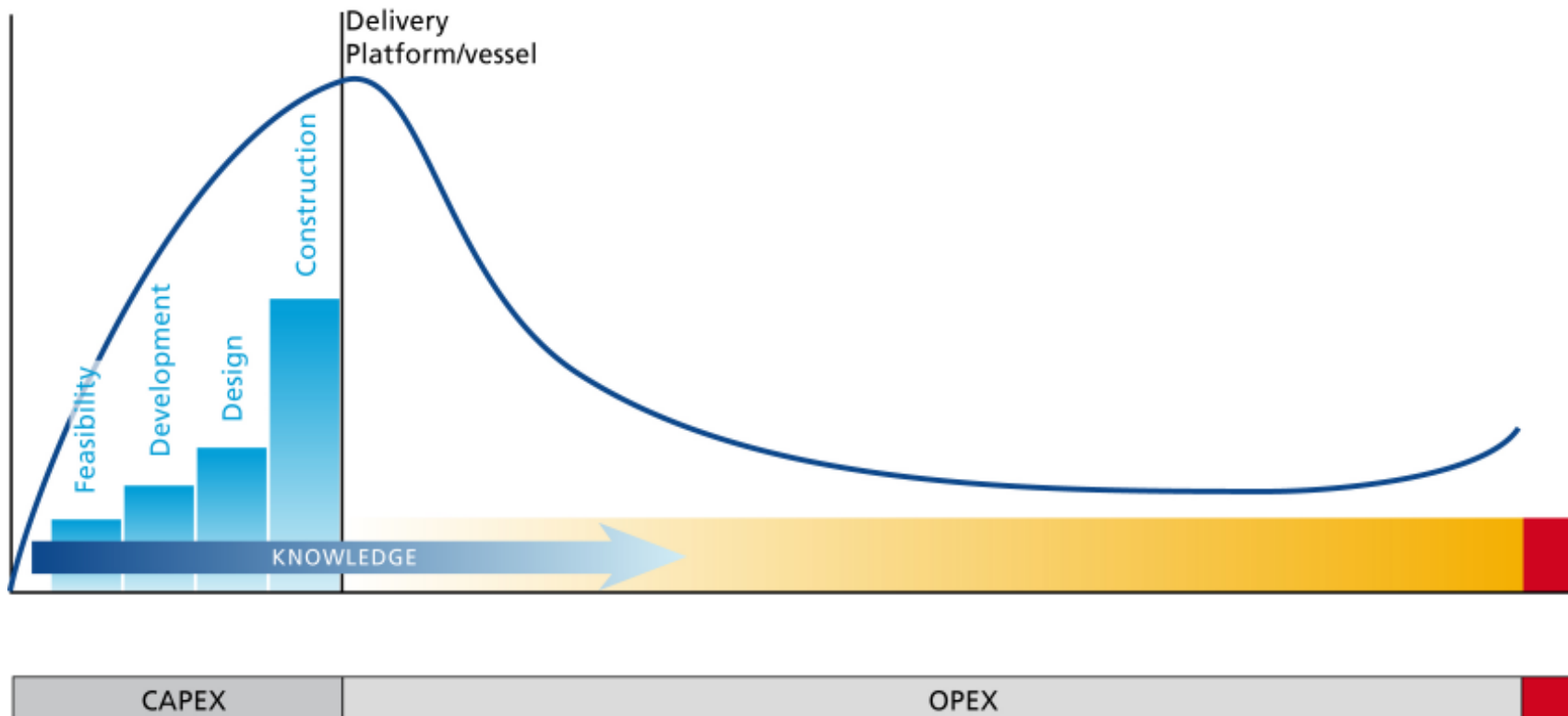


Technology





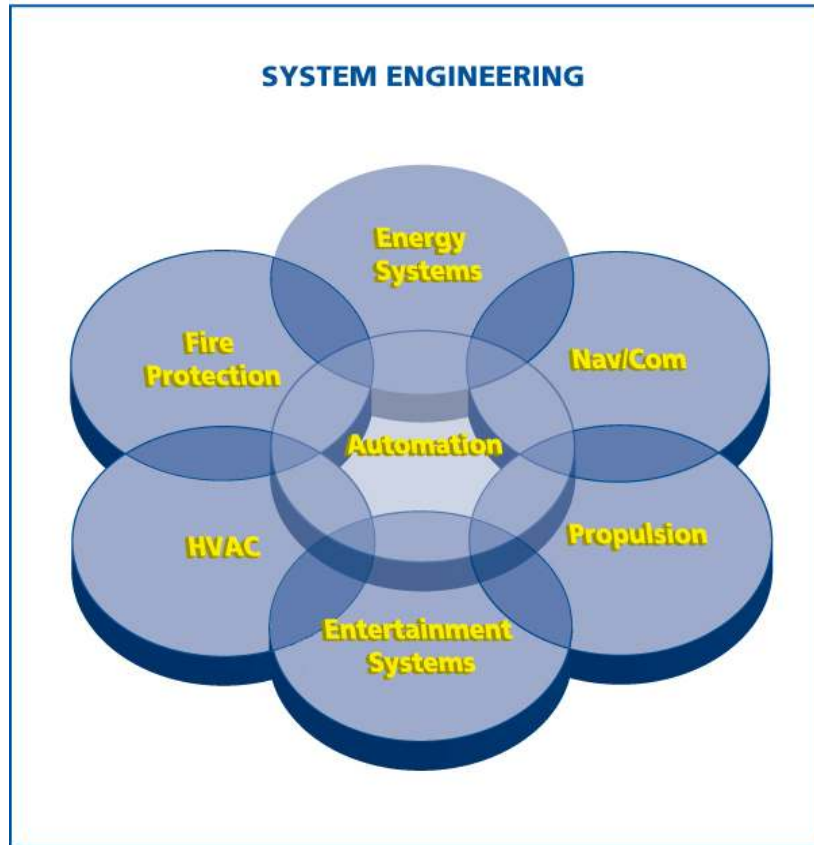
Technical solutions during the full lifecycle





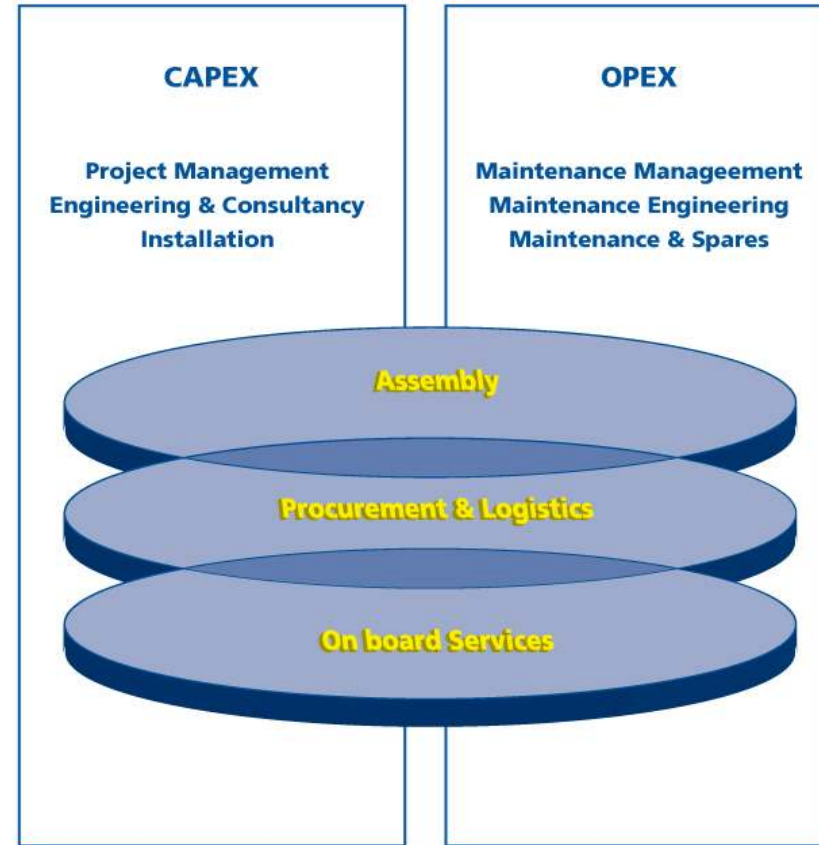
Portfolio: Technologies & Skills

CORE TECHNOLOGIES



COMPETENCE CENTERS

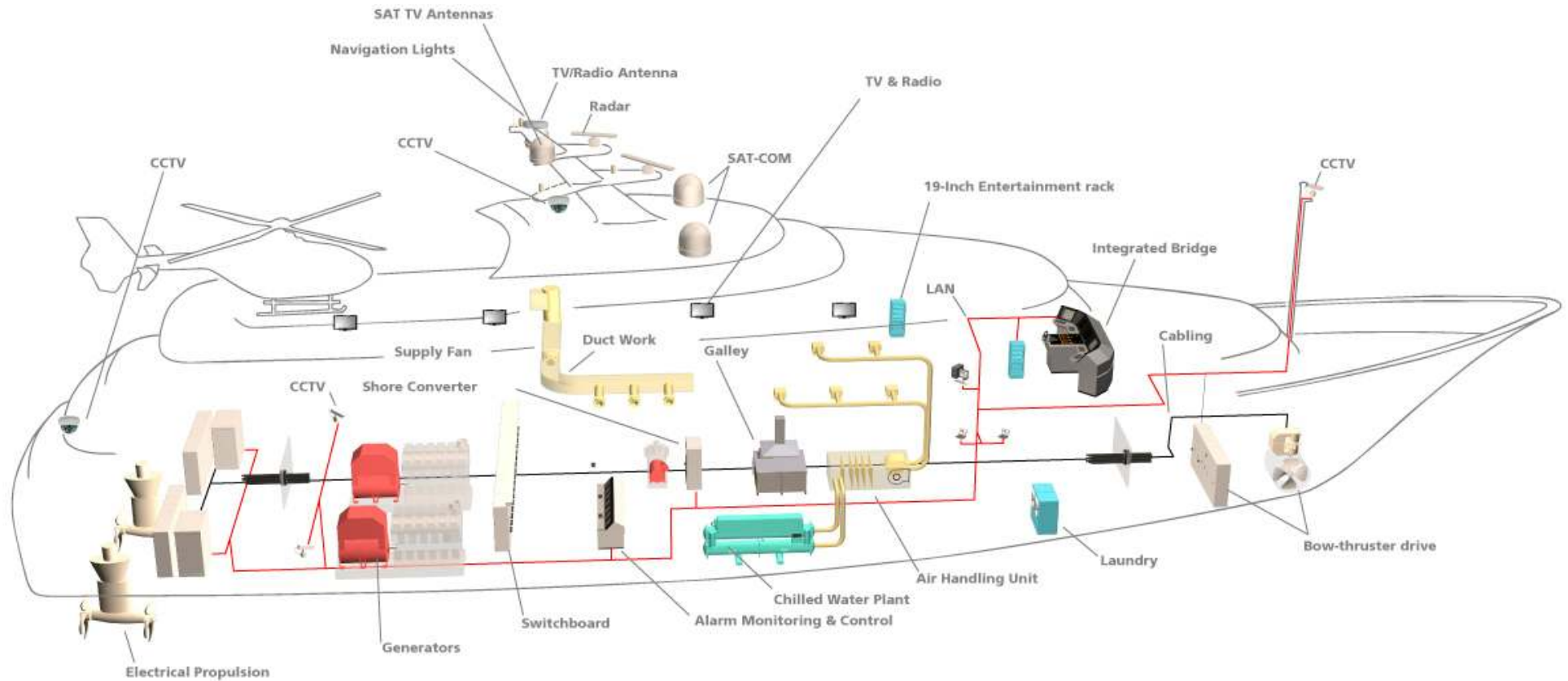
CORE SKILLS



LOCAL FOR LOCAL



Whole Ship Solutions





Global network





Key facts Imtech Marine & Offshore

- Imtech Marine & Offshore is an Electrical, Automation, Nav/Com and HVAC System Integrator.
- We manage projects by accepting responsibility for design, assembly, engineering, site management, installation, commissioning and lifecycle support.
- We support various types of ships and platforms:
 - Naval Ships
 - Special Vessels
 - Offshore Platforms
 - Mega Yachts





IMTECH MARINE & OFFSHORE

Naval, Specials & Offshore



Energy Systems

Yachts



Ship Automation
Products & Systems

After Market & Field Services



HVAC

ALSO PART OF IMTECH MARINE & OFFSHORE



Imtech Marine &
Offshore UK



Imtech Marine &
Offshore France



Imtech Marine &
Offshore Singapore



Free Technics
(Netherlands)



IHC Systems 50%
(Netherlands)



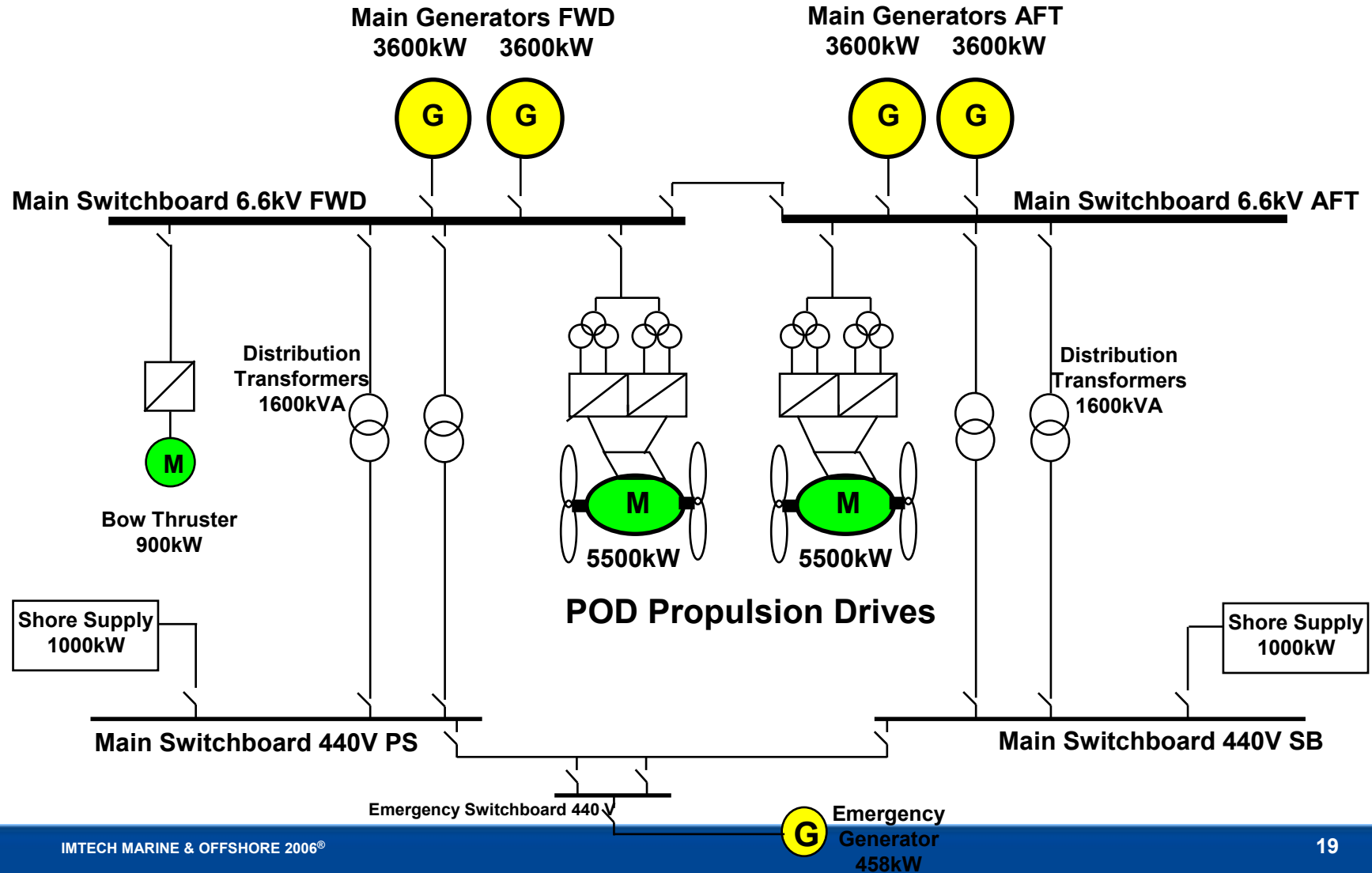
Tess Electrical
Marine 51% (USA)



Imtech Marine & Offshore



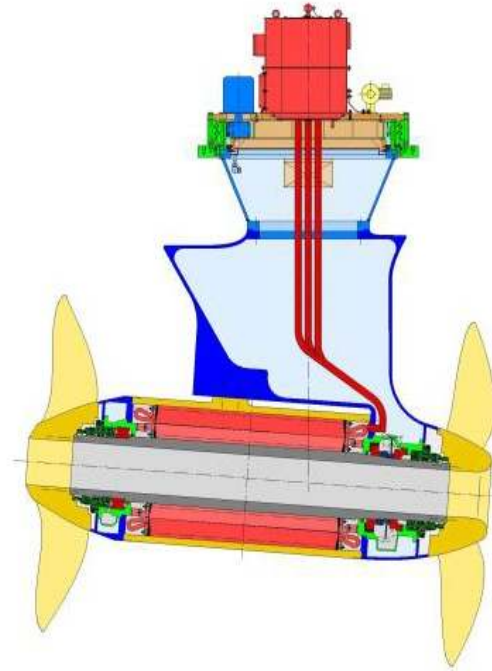
LPD2 - Integrated Vessel Energy Plant (IVEP)





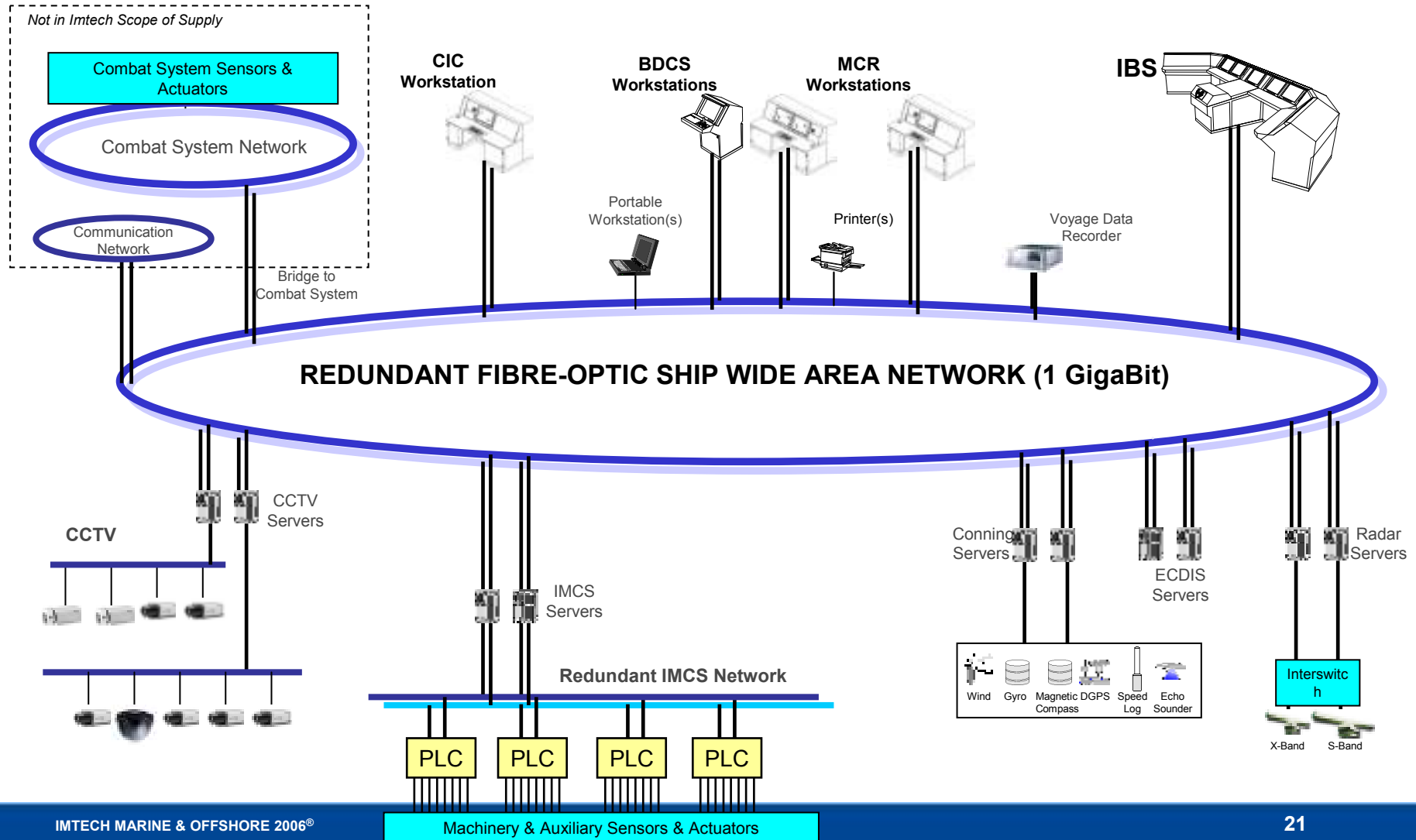
Pod Propulsion

- Ship Design Flexibility
- Volume Saving
- Enhanced Manoeuvrability
(combined with Imtech DP System)
- High Efficiency
- Low Operating Cost
(Optimum use of Diesel Generator power)





System Architecture IMCS LPD-2





Al Mirqab



SYSTEMS



WORLD'S LARGEST
KALEIDOSCOPE SYSTEM



HEATING
VENTILATION
& AIR CONDITIONING



AUTOMATION

SERVICES



PROJECT
MANAGEMENT



ENGINEERING
& CONSULTANCY



ELECTRICAL
INSTALLATION



SITE
MANAGEMENT



COMMISSIONING



TRAINING



MAINTENANCE



SPARE
PARTS



Fjord



SYSTEMS



NAVIGATION & COMMUNICATION



ELECTRICAL PROPULSION



INTEGRATED BRIDGE SYSTEMS



POWER GENERATION & DISTRIBUTION



INTEGRATED PLATFORM MANAGEMENT SYSTEMS



ELECTRICAL DRIVE SYSTEMS

SERVICES



PROJECT MANAGEMENT



SITE MANAGEMENT



MAINTENANCE



ENGINEERING & CONSULTANCY



COMMISSIONING



ELECTRICAL INSTALLATION



SPARE PARTS



Audacia



SYSTEMS

-  NAVIGATION & COMMUNICATION
-  DYNAMIC POSITIONING SYSTEMS
-  ELECTRICAL DRIVE SYSTEMS
-  ELECTRICAL PROPULSION
-  INTEGRATED PLATFORM MANAGEMENT SYSTEMS
-  ELECTRICAL DRIVE SYSTEMS
-  POWER GENERATION & DISTRIBUTION
-  INTEGRATED BRIDGE SYSTEMS

SERVICES

-  PROJECT MANAGEMENT
-  ENGINEERING & CONSULTANCY
-  SITE MANAGEMENT
-  COMMISSIONING
-  MAINTENANCE
-  SPARE PARTS
-  ELECTRICAL INSTALLATION
-  TRAINING



Brabo



SYSTEMS



POWER GENERATION & DISTRIBUTION



INTEGRATED PLATFORM MANAGEMENT SYSTEMS



ELECTRICAL DRIVE SYSTEMS

SERVICES



SITE MANAGEMENT



SPARE PARTS



ENGINEERING & CONSULTANCY



COMMISSIONING



MAINTENANCE



INSTALLATION



PROJECT MANAGEMENT



TRAINING



Aircraft Carrier



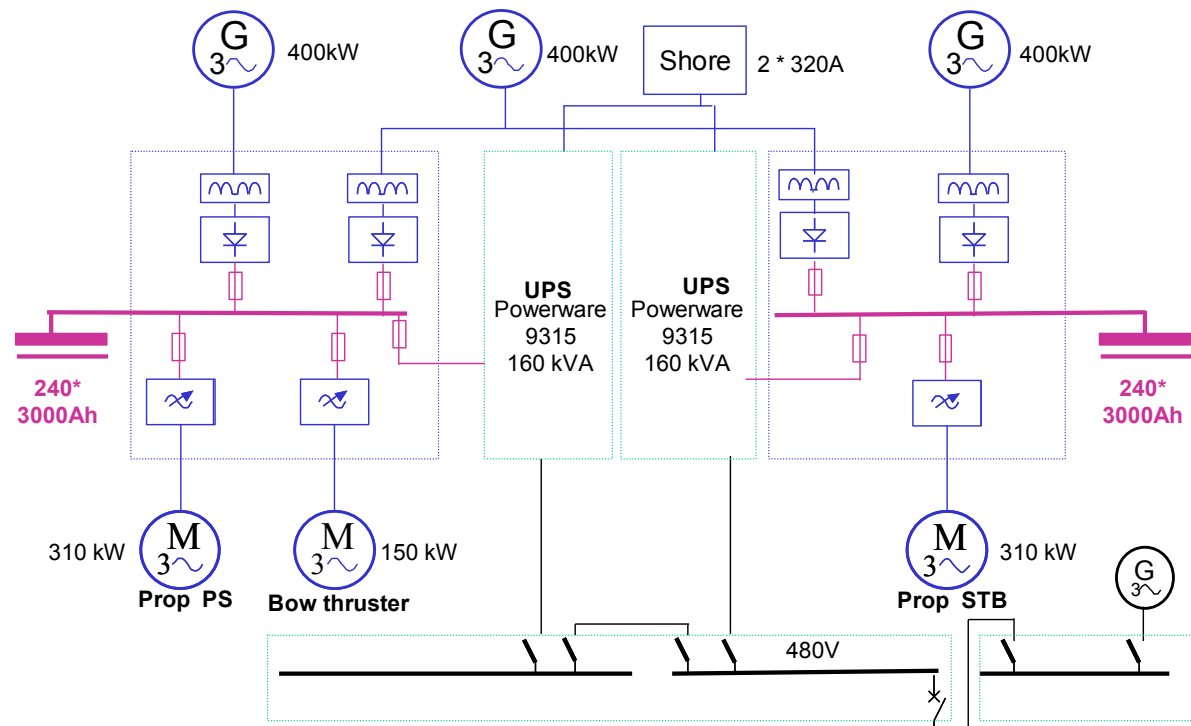
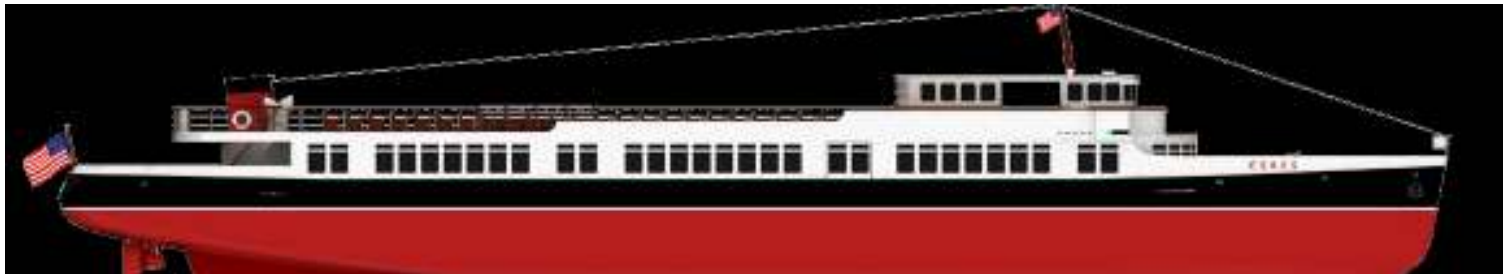


Aircraft Carrier



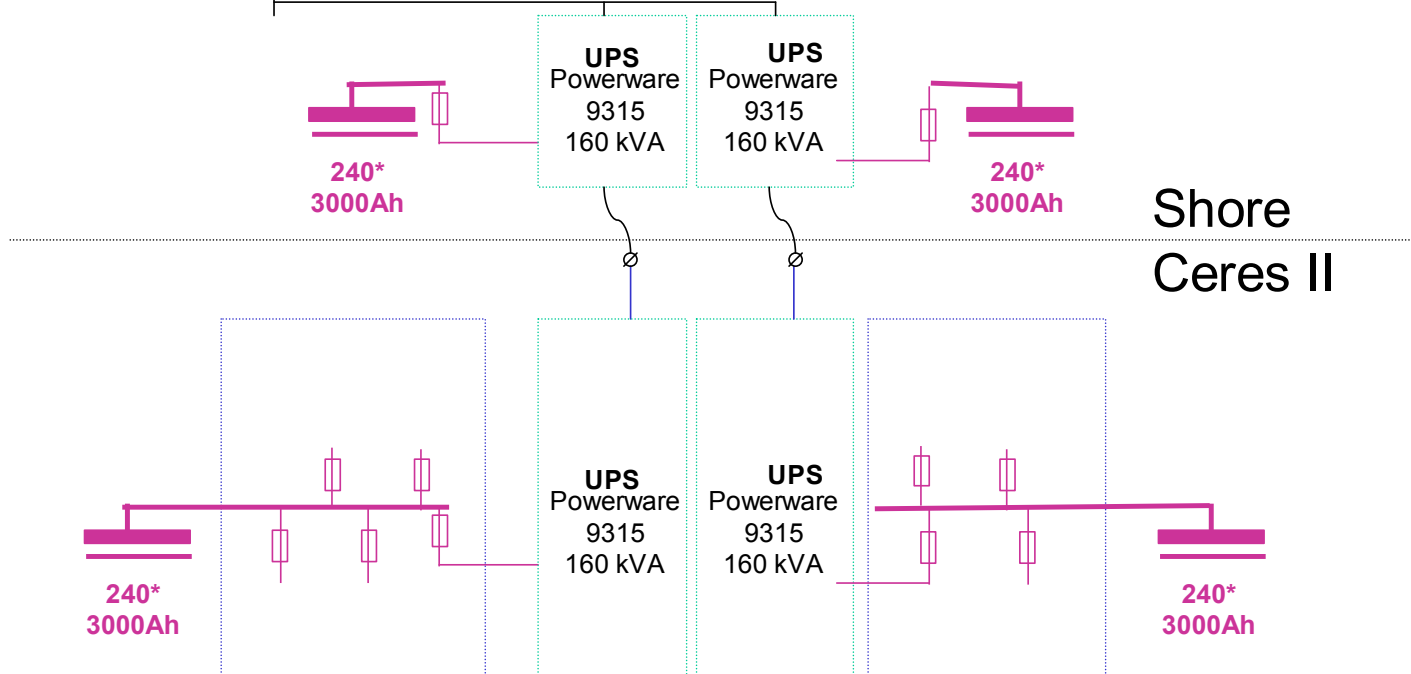
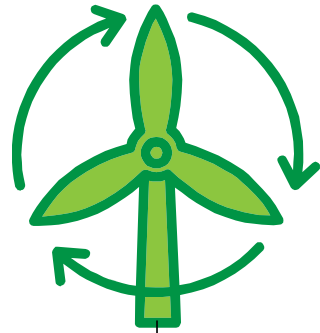


CERES II – Green Cruise Vessel





CERES II – Green Cruise Vessel





The world of technology within your reach